



## Hampstead Heath Consultative Committee

**Date:** MONDAY, 8 JULY 2013  
**Time:** 7.00 pm  
**Venue:** EDUCATION CENTRE, THE LIDO, OFF GORDON HOUSE ROAD,  
HAMPSTEAD HEATH, NW5

**Members:**

Jeremy Simons (Chairman)	Helen Payne, (Friends of Kenwood)
Virginia Rounding (Deputy Chairman)	Mary Port, (Dartmouth Park Conservation Area Advisory Committee)
Xohan Duran, (Representative of People with Disabilities)	Harunur Rashid, (Black and Minority Ethnic Communities representative)
Colin Gregory, (Hampstead Garden Suburb Residents' Association)	Susan Rose, (Highgate Conservation Area Advisory Committee)
Michael Hammerson, (Highgate Society)	Steve Ripley, (Rambler's Association)
Ian Harrison, (Vale of Health Society)	Ellin Stein, (Mansfield Conservation Area Advisory Committee & Neighbourhood Association Committee)
John Hunt, (South End Green Association)	Richard Sumray, (London Council for Sport and Recreation)
Nigel Ley, (Open Spaces Society)	Simon Taylor, (Hampstead Rugby Club)
Alix Mullineaux, (Marylebone Bird Watching Society)	David Walton, (Representative of Clubs using facilities on the Heath)
Susan Nettleton, (Heath Hands)	John Weston, (Hampstead Conservation Area Advisory Committee)
Akin Olukiran, (DISC)	Jeremy Wright, (Heath & Hampstead Society)

**Enquiries:** Alistair MacLellan  
[alistair.maclellan@cityoflondon.gov.uk](mailto:alistair.maclellan@cityoflondon.gov.uk)

**John Barradell**  
Town Clerk and Chief Executive

# AGENDA

## 1. APOLOGIES

## 2. DECLARATIONS BY MEMBERS OF ANY PERSONAL AND PREJUDICIAL INTERESTS IN RESPECT OF ITEMS ON THIS AGENDA

## 3. MINUTES

To agree the public minutes and summary of the meetings held on 11 March 2013 and 8 April 2013.

**For Decision**

- a) Minutes of the Meeting held on Monday 11 March 2013 (Pages 1 - 10)
- b) Minutes of the Meeting held on Monday 8 April 2013 (Pages 11 - 18)

## 4. REPORTS OF THE SUPERINTENDENT OF HAMPSTEAD HEATH (COPIES ATTACHED):-

**For Discussion**

- a) Update on the Hampstead Ponds Project (Pages 19 - 40)
- b) Management Work Plan for Sandy Heath Ride (Pages 41 - 56)
- c) Progress Report on Enhancement of Landscaping Works to Bull Path and Surrounding Area at Parliament Hill Fields (Pages 57 - 76)
- d) Review of Sustainable Planting (Pages 77 - 92)
- e) Sports Update (Pages 93 - 102)

## 5. QUESTIONS

## 6. ANY OTHER BUSINESS THAT THE CHAIRMAN CONSIDERS URGENT

## 7. DATE OF NEXT MEETING

The next meeting will take place on Monday 4 November 2013 at 7:00pm in the Education Centre, the Lido, off Gordon House Road, Hampstead Heath, NW5.

**HAMPSTEAD HEATH CONSULTATIVE COMMITTEE**  
**Monday, 11 March 2013**

Minutes of the meeting of the Hampstead Heath Consultative Committee held at Education Centre, the Lido, off Gordon House Road, Hampstead Heath, NW5 on Monday, 11 March 2013 at 7.00 pm

**Present**

**Members:**

Jeremy Simons (Chairman)  
Deputy Michael Welbank (Deputy Chairman)  
Xohan Duran  
Colin Gregory  
Michael Hammerson  
Ian Harrison  
John Hunt  
John Rogers  
Helen Payne  
Mary Port  
Susan Rose  
Robert Slowe  
Richard Sumray  
David Walton  
John Weston  
Susan Nettleton

**Officers:**

Lorraine Brook	- Town Clerk's Department
Simon Lee	- Superintendent of Hampstead Heath, Queen's Park & Highgate Wood
Declan Gallagher	- Operational Service Manager
Richard Gentry	- Constabulary and Queen's Park Manager
Paul Maskell	- Leisure and Events Manager
Lucy-Anne Murphy	- Assistant Operational Services Manager

**1. APOLOGIES**

Apologies for absence were received from Alix Mullineaux (Marylebone Bird Watching Society) and Jeremy Wright (Heath & Hampstead Society).

**2. MEMBERS' DECLARATIONS UNDER THE CODE OF CONDUCT IN RESPECT OF ITEMS ON THE AGENDA**

There were none.

### 3. **MINUTES**

The minutes of the meeting held on 6th November 2012 were agreed as a correct record.

#### **Matters Arising**

##### **Committee views and suggestions**

Whilst acknowledging that the Committee did not have decision making powers, it was agreed that, as a consultative committee, Members' views and suggestions should be reflected accordingly in the minutes.

##### **National Planning Framework and Neighbourhood Planning - Implications for the City of London's Open Spaces**

Following the discussion at the last meeting about resource implications associated with attendance at Neighbourhood Forum meetings, Simon Lee explained that Highgate Neighbourhood Forum had been invited to join him on a walk of the Highgate chain of ponds in order to highlight current issues.

Whilst acknowledging that attendance at all constituted Neighbourhood Forum meetings was not viable, it was agreed that maintaining a dialogue, wherever possible, was helpful.

##### **Review of Annual Work Programme**

Simon Lee explained that some responses had been received in respect of the annual work programme.

##### **Minute circulation**

Some Members asked whether the draft minutes could be circulated as soon as they became available, as opposed to being circulated in advance of the next meeting. The Committee was advised that all draft minutes, once cleared by the Chairman, were accessible via the City of London's webpages. However, the Superintendent undertook to circulate the draft minutes via email as soon as they were available. A check on Members' details would be undertaken prior to circulation of the minutes of this meeting.

### 4. **SUPERINTENDENT'S UPDATE**

The Superintendent was heard relative to the following matters:

##### **Landscaping works at the entrance to the Heath**

Simon Lee referred to the landscaping works that were underway at the entrance to the Heath and the substantive changes that these works represented in respect of softening quite a harsh municipal entrance and enhancing the Heath's impact on the area.

##### **Lido works**

Members were advised about the significant refurbishment works that would take place in the future one the longer term objectives of the works had been clarified.



### **East Heath Car Park**

With reference to the East Heath Car Park which was currently shut whilst improvement works were taking place, Simon Lee explained that whilst some inconvenience was being caused as a result of the closure the works would be welcome as a result of enhanced aesthetics and improved parking facilities.

In response to a query, Simon Lee confirmed that the car park would be formally reopened after Easter. It was commented that the softening off on the East Side of the Heath had had a positive effect and it was suggested that, if possible, hedging around the entire car park should be pursued in order to bring the Heath closer to the road.

Some concern was raised regarding the poor condition of the grass and the paths which, in a large number of areas across the Heath, had widened. The Committee acknowledged that the exceptionally wet weather had had a significant impact on the condition of the Heath in some areas and that it would take some time for those areas to recover. As temporary fencing had been erected in some areas, it was felt that fencing in other areas as a responsive measure, on a short or longer term basis, should be used. Whilst noting that municipalisation of the area should be avoided, the Superintendent acknowledged that a holistic report outlining a strategic approach to dealing with such issues in the future should be considered at a future meeting of the Committee.

### **Gas Leaks**

With regards to the closure of the path next to the Men's Pond as a result of a gas leak, the Committee noted that the gas leak had now been fully rectified. However, the issue of perishing pipes and seals and consequently, future gas leaks in areas across the Heath remained a significant issue. Whilst further excavation work might have to be undertaken, the situation would continue to be closely monitored.

### **National Grid works**

The Superintendent commented on the unfavourable condition of the site at the weekend following the completion of works and explained that a high-level dialogue was now underway with National Grid to ensure that there was a proper reinstatement of the area as soon as the ground was in a sufficient condition to allow for grass planting and seeding. It was hoped that matters would be resolved without unnecessary delay.

### **South East Cross-Country Championships**

Following the deferral of the South East Cross-Country Championships as a result of exceptionally poor weather, it was noted that some concern and objections had been raised by the athletics fraternity and some residents. However, the large scale event had gone well and no long term damage had been caused to the Heath.

5. **HAMPSTEAD HEATH WATER MANAGEMENT PROJECT - PROGRESS REPORT**

Simon Lee (Superintendent, Hampstead Heath) was heard relative to progress with implementation of the Hampstead Heath Ponds Project (Water Management Project). He referred to the report before Members setting out project management activities, risk mitigation factors and also the work that is underway to develop a Communication and Engagement Plan. An indicative communication timetable, as set out at page 51, was highlighted, although it was noted that due to the complexity of the project, it would take some time to reach the final design stage.

With regards to initial public consultation, Atkins had received approximately 79 responses and the feedback had generally been very positive. Once the long and short-listing exercises had been undertaken, comprehensive consultation would commence involving the public, the Stakeholder Group and the Committee.

In respect of the appointment of the contractor, a number of tenderers had withdrawn within a short space of each other and so, due to the complexity of the project requirements which included substantial research into and understanding of the Heath, further work in respect of the procurement process was required to ensure that the most appropriate contractor could be identified. It was acknowledged that the "Hampstead Effect" could also be a contributing factor and therefore feedback from the contractors was important. With reference to the Special Meeting of the Consultative Committee which would take place on 8<sup>th</sup> April, the preliminary results of the fundamental review from Atkins would be circulated ahead of the meeting.

Ian Harrison (Vale of Health Society) then updated the Committee about the work of the Stakeholder Group in respect of the project, which had involved monthly meetings, a number of site visits to the principal chain of ponds and attendance at a number of workshops. Appendix 1 (Hampstead Heath Ponds - A Critical Review of key issues by the Water Management Stakeholder Group) set out the key issues, threats and opportunities relative to each pond, thus enabling a divergence of issues to be distilled into a single document for future reference. Whilst substantive revisions to the project were not anticipated and less intrusive works overall were expected, it was noted that the document could only serve as a snapshot of current issues.

In response to a query regarding the introduction of a new approach to the project, the Superintendent commented on the use of different terminology but assured Members that no major changes had been introduced. The Committee was advised that the issues had been reviewed afresh and appropriate options for dealing the problems were now being explored in detail. It was hoped that the scale of the works would be reduced but that the forthcoming reports from Atkins, including a technical summary, would clearly set out suggested options at the appropriate stages.

Members of the Committee thanked the Stakeholder Group and Peter Wilder (Strategic Landscape Architect) for their development of the critical review

document. Thanks were also conveyed to the City of London Corporation for its collaborative work with the Stakeholder Group, specifically in respect of the tender approval arrangements and also for the extension of the consultation period. It was suggested that future consultation should be set out in a clear strategy to ensure that any further consultation was based around clear propositions.

In noting that the project may now warrant reduced intervention, the Committee was advised that as no precise scheme was currently in place, it was difficult to gauge exact costs. However, delay to the project remained a risk and therefore all options to engage suitable contractors at the earliest opportunity, would be pursued.

**NOTED.**

**6. REVIEW OF THE HAMPSTEAD HEATH CONSTABULARY 2012**

Richard Gentry (Constabulary and Queen's Park Manager) provided an overview of the main issues set out in the report before Members relative to the work of the Hampstead Heath Constabulary between 1st January 2012 and 31st December 2012, and progress made in respect of achievements on key objectives.

The Committee was updated about key activities in 2012 including a two week enforcement campaign to target illegal cycling hotspots on the Heath; the continuation of a number of successful partnership strategies; free micro-chipping for dogs events; an increase in responsible fishing within the ponds; an increase in Byelaw 32 offences; and the development of a response plan to maximise public safety at the lido.

In response to a question regarding the increase in Byelaw 32 offences, Richard Gentry explained that improved training amongst officers, enhanced patrolling and reporting arrangements; and greater awareness of, and reference to the Byelaws, were key factors as opposed to there having been an actual rise in such offences.

The Committee welcomed the report and the work undertaken by the Hampstead Heath Constabulary but suggested that a future report, detailing proposed actions and performance objectives, would be beneficial to enable the Committee to review outcomes rather than input.

Some concern was raised regarding the use of the Heath by commercial dog walkers, some of whom walked large numbers of dogs at one time and therefore potentially posed some risk to other users of the Heath, particularly other dog walkers and children. It was suggested that the issue posed a health and safety risk to the Corporation and a more stringent approach should be explored, either as part of a licensed scheme or by using Dog Control Orders. It was agreed that a report on dog walker issues be submitted to the autumn meeting of the Committee.

**RESOLVED - That:-**

- (i) the Review of the Hampstead Heath Constabulary 2012 be noted; and
- (ii) a detailed report into issues associated with commercial dog walkers on the Heath be submitted to the autumn meeting of the Hampstead Heath Consultative Committee.

**7. UPDATE ON HAMPSTEAD HEATH - PUBLIC SEX ENVIRONMENT OUTREACH WORK, 2012**

Richard Gentry (Constabulary and Queen's Park Manager) provided an overview of the main issues set out in the report before Members relative to the Public Sex Environment Outreach Work undertaken in 2012, the second year of such work.

The Committee was advised that the overriding objective of the outreach work was to ensure that use of the Heath as a Public Sex Environment did not adversely affect others' enjoyment, or the natural aspect of, the Heath. It was noted that the Heath was regarded internationally and locally as a safe area to visit and whilst visitors to West Heath had declined over the past ten years, littering, including sexual detritus, remained a key issue. Consequently, litter pick events had proven successful not only to reduce litter but also the enable stakeholders to engage with those using the Heath and profile sexual health messages.

It was noted that the Heath incorporated a number of different public sex environments and therefore different issues such as public decency. Consequently, all of the issues had to be carefully monitored and, going forward, a partnership approach in 2013 would ensure that an increase in crime and anti-social behaviour on the Heath was minimised.

**RESOLVED** - That the Committee notes the partnership work that has been carried out by the Hampstead Heath Constabulary, Terence Higgins Trust and other agencies, in promoting the safe and responsible use of Hampstead Heath during 2012.

**8. A REVIEW OF HAMPSTEAD HEATH 2012 OLYMPIC AND PARALYMPIC GAMES - GREEN TO GOLD ACTIVITIES**

Paul Maskell (Leisure and Events Manager, Hampstead Heath) provided an overview of the main issues set out in the report before Members relative to a Review of Hampstead Heath 2012 Olympic and Paralympic Games - Green to Gold Activities. The report detailed the success of the Green to Gold Campaign and events held on Hampstead Heath in support of the London 2012 Olympic and Paralympic Games.

The Committee was appraised about a number of key achievements of the campaign included the delivery of a number of significant sporting events on the Heath, including the English National Cross-Country Championship and the 14th Duathlon. Reference was made to successful cultural events on the

Heath such as the artistic installation by Jeremy Deller; the "Play me, I am yours" piano as part of the City of London Festival and increased partnership work with individuals, organisations and other local authorities including the London Boroughs of Barnet and Camden.

The Committee thanked Paul Maskell and the team for all their hard work in delivering such a successful programme of activities in 2012.

**NOTED.**

**9. HAMPSTEAD HEATH EDUCATION SERVICE - ANNUAL REPORT 2012**

The Committee considered a report relative to the Hampstead Heath Education Service Annual Report 2012, reviewing the success and key achievements of the Hampstead Heath Education Service, including its work on formal and informal education, community education and partnership working.

Paul Maskell (Leisure and Events Manager, Hampstead Heath) outlined some of the key educational activities delivered through both the formal and informal education programmes which have resulted in an increase in public engagement and enhanced the use of educational resources by schools.

With regards to City Bridge Trust funding, it was noted that the education service formed an essential aspect of the City Bridge Trust application and was on track to complete all of its targets for 2012, including continuing work on the teaching garden at the Kenwood Eco-field. The Superintendent reminded the Committee that funding would cease in March 2014. Therefore new objectives and performance indicators in respect of a range of services including integrated play and education provision would need to be developed if an extended funding bid to the City Bridge Trust were to be pursued. Alternatively, new initiatives, in line with the City Bridge Trust criteria, would have to be explored. It was noted that if City Bridge Trust funding were not forthcoming, alternative sources of revenue to fund educational activities would have to be considered or potentially, services reduced.

**NOTED.**

**10. REVIEW OF THE HAMPSTEAD HEATH SUMMER EVENTS PROGRAMME 2012**

Members received a report of the Superintendent, Hampstead Heath relative to a review of the Hampstead Heath Summer Events Programme in 2012.

Paul Maskell (Leisure and Events Manager, Hampstead Heath) outlined the main issues set out in the report before Members, including implementation by the Education and Play Teams on Hampstead Heath of 31 nature focussed events during the summer holidays to inspire children and families about nature. It was noted that the summer programme had been adapted to appeal to other audiences including those under 5. As demonstrated by the participation figures in Appendix A, the events had proven very popular.

As previously suggested, a Member of the Committee requested that further consideration be given to the development of an interpretation centre on the Heath.

The Committee welcomed the report and praised the team for its efforts and achievements.

**RESOLVED** - That the Committee notes the success of the Summer Events Programme 2012.

11. **REVIEW OF AFFORDABLE ART FAIR ON HAMPSTEAD HEATH IN OCTOBER 2012 AND PROPOSALS FOR 2013 AND BEYOND**

The Committee considered a report of the Superintendent relative to a review of the Affordable Art Fair on Hampstead Heath in November 2012 and proposals beyond 2013.

The Superintendent commented on the success of the 2012 event which attracted over 18,000 visitors over the course four and a half days and which led to the sale of £2.8m of art work being sold by the 107 exhibitors. With reference logistical issues associated with staging the event, it was noted that some problems had been encountered in respect of the marquee contractor but that similar problems were not anticipated in 2013.

In respect of costs, the Superintendent confirmed that the event was profitable and in June 2013, the position was expected to be further strengthened as the Affordable Art Fair sought to link into other community events. Whilst some scepticism was expressed regarding the costs associated with marketing and staffing and it was suggested that the City of London Corporation should explore the opportunities to increase its fees in future years, it was noted that the event had been most successful and that this bode well for future events.

A Second Event Proposal (Contemporary Garden Fair) from the Affordable Art Fair was tabled at the meeting, outlining a possible option to deliver a second event that would be held in the same temporary structure constructed for the Affordable Art Fair in 2014. It was noted that the Affordable Art Fair had undertaken a significant amount of research and it was felt that the 2nd event would be of significant interest and therefore benefit not only to the local community and Hampstead Heath but also to the City of London Corporation in terms of generating additional revenue.

**RESOLVED** - That:-

- (i) the Committee note the success of the 2012 Affordable Art Fair in welcoming 18,500 (adult) visitors to the Heath and raising additional income to support management of the site;
- (ii) the Committee note the plans that are underway with regards the June 2012 event; and



- (iii) the Committee support, in principle, the hosting of another event on the back of the Affordable Art Fair in June 2014, subject to consideration of a more detailed report later in 2013.

12. **HAMPSTEAD HEATH SPORTS ADVISORY FORUM MINUTES**

Members received the minutes of the Hampstead Heath Sports Advisory Forum meeting held on 4th February 2013 and received a verbal update from Bob Slowe (representative of clubs using facilities on the Heath) about the walk that took place on Sunday in respect of securing funding from Places People and Play to build a new cricket pavilion. It was noted that funding remained a challenge.

In respect of the separately circulated paper relative to the Hampstead Heath Draft Charging Policy, Bob Slowe explained that the paper had been drafted to reflect a number of factors that ultimately affect charging for a wide range of informal and formal sports and recreational activities on the Heath. It was hoped that the suggested framework for charging would, at a more strategic level, enable the Sports Forum and the Superintendent to review and agree future charging increases in a consistent and considered manner.

With reference to the long term possibility obtaining a second lawn for the Croquet Club, Ian Harrison explained that informal discussions had taken place with the Superintendent in respect of the possible location of a second croquet lawn, subject to securing appropriate funding and approval in the long term.

**RESOLVED** - That:-

- (i) that the minutes of the Hampstead Heath Sports Advisory Forum meeting held on 4th February 2013 be received; and
- (ii) the Committee endorse the Draft Charging Policy as set out in the separately circulated report (appended to the Hampstead Heath Sports Advisory Forum Minutes).

13. **QUESTIONS**

**Planning Decisions around the Heath**

A query was raised regarding the creation of supplementary guidance in collaboration with neighbouring London Boroughs to highlight planning considerations around the Heath and preserve outward views. The Superintendent explained that due to the Local Development Framework, it was difficult to engage London Authorities such as Camden on such matters from a policy perspective. It was however suggested that the issues could be progressed further at a Neighbourhood Forum level. The Superintendent confirmed that he would circulate the "Fringes of the Heath" document that had been produced some time ago and could possibly serve as a helpful discussion tool at neighbourhood forums.

14. **ANY OTHER BUSINESS THAT THE CHAIRMAN CONSIDERS URGENT**  
**Thanks to Bob Slowe**

The Chairman expressed, on behalf of the Committee, his thanks to Bob Slowe (representative of clubs using facilities on the Heath) upon his relinquishment as Chairman of the Hampstead Heath Sports Advisory Forum and his membership of the Consultative Committee. The Chairman praised Mr Slowe for his commitment to encouraging sports on Hampstead Heath whilst also recognising the natural beauty of the landscape. It was noted that Mr Slowe recognised the importance of both competitive and non-competitive sports on the Heath, as highlighted by the success of the Highgate Harriers who were enjoying record membership applications. The Chairman thanked Mr Slowe for his wise counsel and commitment to the work of the Committee and wished him, on behalf of the Committee, a happy and healthy future.

Mr Slowe replied in suitable terms.

**RESOLVED** - That the Committee's thanks to Bob Slowe, upon his relinquishment as Chairman of the Hampstead Heath Sports Advisory Forum and his membership of the Consultative Committee, be noted.

15. **DATE OF NEXT MEETING**

The next meeting of the Hampstead Heath Consultative Committee will take place on 8<sup>th</sup> April 2013, primarily to consider the Fundamental Review of the Hampstead Heath Ponds Projects. Thereafter, the Committee will meet on 8<sup>th</sup> July 2013.

**The meeting ended at 9.01 pm**

-----  
Chairman

**Contact Officer:**

Lorraine Brook

Committee & Member Services, Town Clerk's Department

[Lorraine.brook@cityoflondon.gov.uk](mailto:Lorraine.brook@cityoflondon.gov.uk)

Tel: 020 7332 1409



## HAMPSTEAD HEATH CONSULTATIVE COMMITTEE Monday, 8 April 2013

Minutes of the meeting of the Hampstead Heath Consultative Committee held at Education Centre, Parliament Hill Fields, Hampstead Heath, NW5 1QR on Monday, 8 April 2013 at 7.00 pm

### Present

#### Members:

Jeremy Simons (Chairman)  
Deputy Michael Welbank (Deputy Chairman)  
Xohan Duran (Representative of People with Disabilities)  
Colin Gregory (Hampstead Garden Suburb Residents' Association)  
Michael Hammerson (Highgate Society)  
Ian Harrison (Vale of Health Society)  
John Hunt (South End Green Association)  
Nigel Ley (Open Spaces Society)  
Alix Mullineaux (Marylebone Bird Watching Society)  
Susan Nettleton (Heath Hands)  
Mary Port (Dartmouth Park Conservation Area Advisory Committee)  
John Rogers (Ramblers' Association)  
Susan Rose (Highgate Conservation Area Advisory Committee)  
Richard Sumray (London Council for Sport and Recreation)  
Jeremy Wright (Heath & Hampstead Society)

#### Officers:

Lorraine Brook	- Town Clerk's Department
Sue Ireland	- Director, Open Spaces
Simon Lee	- Superintendent of Hampstead Heath, Queen's Park & Highgate Wood
Richard Gentry	- Constabulary and Queen's Park Manager
Paul Monaghan	- City Surveyor's Department
Richard Litherland	- City Surveyor's Department

#### 1. APOLOGIES

There were no apologies for absence.

#### 2. MEMBERS DECLARATIONS UNDER THE CODE OF CONDUCT IN RESPECT OF ITEMS ON THE AGENDA

There were none.

#### 3. MINUTES

The minutes of the last meeting held on 11<sup>th</sup> March 2013 were tabled.

**RESOLVED:-** That consideration of the minutes of the last meeting on 11<sup>th</sup> March 2013 be deferred to the next meeting.

4. **REPORTS OF THE SUPERINTENDENT OF HAMPSTEAD HEATH:-**

5. **HAMPSTEAD HEATH PONDS PROJECT - ASSESSMENT OF THE DESIGN FLOOD**

The Superintendent of Hampstead Heath introduced the report before the Committee relative to the results on the first major task undertaken by the Design Team in relation to the Hampstead Heath Ponds Project and the Fundamental Review of the basis for the whole project. The report before Members set out the details of the Design Flood assessment and Members views were sought thereon.

Following an earlier presentation to the Heath Ponds Project Stakeholder Group by Dr Andy Hughes (Panel Engineer on the Fundamental Review) on 18<sup>th</sup> March 2013, written queries in respect of technical aspects of the project were submitted to Atkins. An updated list of questions was tabled to Committee Members and further questions were invited by no later than the evening of Wednesday, 10<sup>th</sup> April 2013. The Committee noted that following submission to Atkins, responses would be provided in advance of the special meeting of the Hampstead Heath Management Committee on 29<sup>th</sup> April 2013.

Ian Harrison (Vale of Health Society and Chairman of the Stakeholder Group) updated the Committee about the Stakeholder Group's progress to date. He felt that the group was now working well and, even before seeing Atkins' new, lower, flood projections, had a good prospect of reaching consensus on at least the majority of key issues. The new flood assessment was very encouraging but Stakeholder Group Members felt that a face-to-face meeting with Atkins was vital if full confidence was to be established that the revised assessment was soundly based. Such a meeting was offered for April but might now be deferred to May but this was not deemed to be acceptable. More generally, if the Stakeholder Group was to be able to inform to a great degree the deliberations and discussions of the Consultative Committee, it was essential (not least in order to reduce any risk of subsequent judicial review challenge), that they have adequate time and information to be able to reach properly considered conclusions at each stage of the process, even if this ultimately meant stretching the existing City of London decision-making timetable. Given how well the Stakeholder Group was working, it would be a tragedy if avoidable time constraints were to prevent proper decision-making and input.

In noting Mr Harrison's comments, the Chairman confirmed that a discussion about the Design Flood assessment would not take place at the Hampstead Heath Management Committee on 15<sup>th</sup> April 2013 but would instead take place at a special meeting on 29<sup>th</sup> April 2013. At this stage, the views of the Consultative Committee and the Stakeholder Group would be taken into account. The Committee was therefore invited to submit any additional queries by no later than Wednesday evening to ensure that all responses were submitted to Atkins.

Dr Andy Hughes then delivered a short presentation to the Committee in respect of the Fundamental Review of the basis of the project undertaken by

Atkins and explained how they had determined that whilst works were still essential to reduce the City of London's liability and meet its duty of care to communities south of the Heath, the size of potential floods in "extreme rainfall events" was less than those derived by previous hydrology consultants. He also outlined the consultation activities that had been undertaken to date, and those planned in the future, involving the Stakeholder Group.

Dr Andy Hughes provided an overview of the Design Flood assessment and the Fundamental Review, highlighting the sympathetic approach to the works that would be taken and the balance that would have to be sought in respect of minimising the risk of dam failure and damage resolution; and environmental solutions. Commenting on the Panel Engineer requirements, it was noted that best practice led solutions had to be delivered and future modelling would be intended to address both short and long term considerations. The Committee was advised that more accurate calculations to those previously used by Haycock Associates had been reviewed and an industry standard hydraulic modelling package used which would be beneficial both now and in the longer term. Such calculations enabled the team to predict how the water would affect the dams both flowing over and around them.

In respect of the flood assessment, it was noted that the recent calculations differed to Haycock Associates and a reduced flow of water was now anticipated which, in turn, meant that less engineering works were anticipated. Following a brief explanation about over-topping and peak velocities of water through the dam, Dr Hughes explained that whilst works were required, they may not be required on all dams. Consequently, the current position was that the least amount of works as possible would be undertaken.

Dr Hughes outlined the current options available in respect of the Ponds Project and explained that, in light of the need to meet best practice and satisfy existing standards, there were two approaches:- (1) the legislative approach and (2) the non-legislative approach- with the second option favoured as it enabled a holistic approach to providing the best solution for the Heath. Thereafter, the focus of the project would be on identifying suitable options such as minimising engineering solutions, raising dams and consideration of the ponds as a whole rather than in isolation. In terms of next steps, Dr Hughes stressed the need to identify those schemes that would reduce the flow of water and focus on the appropriate engineering solutions.

A number of questions were raised following the presentation:-

Referring to future liability considerations and case law precedent, Dr Hughes outlined the implications of Ryland's and Fletcher, common law and the Reservoirs Act in respect of managing the situation at Hampstead Heath and went on to explain that a risk based approach would ensure that the best solutions were identified across the dams and with minimal impact.

In noting that some damage of a dam was acceptable but failure was not, a Member of the Committee asked as to what extent of damage would be acceptable. Dr Hughes explained that the matter was very complex and that

the current situation in respect of over-topping was very uncertain. He further explained that some over-topping could be acceptable subject to velocity and duration levels. Consequently options to minimise over-topping and reduce velocities and duration, whilst minimising hard engineering, would be based on judgement taking into account the comprehensive hydrology results. Responding to a question about the implications of vegetation on the dams, Dr Hughes explained that natural growth on dams did not necessarily mean that they would fail. Consequently whilst it was hoped that as much vegetation could be retained on dams across the Heath, the conditions needed to be as favourable as possible and therefore the situation would be carefully managed.

Following a query about the Kenwood Ponds and how these had been factored into the peak velocity figures, Dr Hughes explained that the Kenwood system had been modelled even though this did not fall within the Corporation's remit. Dr Hughes further explained that the ponds were already over-topping and whilst discussions with English Heritage had taken place, the focus remained on the Heath ponds. Simon Lee (Superintendent) explained that meetings had been conducted with English Heritage and that works to the two ponds in Kenwood had been undertaken in 2006/07. It was noted that English Heritage was aware of its current responsibilities.

Following a question in respect of future flood risk to surrounding neighbourhoods as a result of any future works up-stream, Dr Hughes explained that the future works would not compromise the surrounding neighbourhoods in any way. Simon Lee advised the Committee that this was a critical issue and that discussions had taken place with Thames Water and the London Borough of Camden at a past Stakeholder Group meeting regarding the surface water drainage issues. Paul Monaghan (City Surveyor's Department) advised the Committee that whilst the Corporation would continue to work closely with Camden and provide assistance where necessary, it would not compromise its own objectives and/or risk increased liability.

Referencing earlier discussions in respect of the existing legislation, the apparent hierarchy between different Acts and the implications for liability as a result of competing legislation, a Member of the Committee asked whether a response had been received from DEFRA. Dr Hughes explained that he had written to Ministers and DEFRA but that no responses had yet been received. He advised that in respect of the Corporation's legal obligations, Counsel's opinion had previously been sought.

Following a query about why Atkins' run-off percentage calculations differed to those previously provided by Haycocks and Binney's, a brief explanation was provided about Atkins's calculation methodology. It was suggested that default values may have been quoted in the past, thus leading to a figure of 90% and 27% respectively, as opposed to Atkins's figure of 76%.

In respect of calculating loss of life, Dr Hughes explained that this was very complicated, taking into account a wide range of issues and variables such as velocity and duration levels, the type of property and whether people were located at home during the daytime. Loss of life is then evaluated across the

variables to determine both low and high extremes, taking into account legislative requirements.

A query was raised about the decision-making process and how the future options for each dam would be considered in the context of all of the ponds rather than in isolation. Dr Hughes advised that the views of the Stakeholder Group and the Consultative Committee would be fed back to the Management Committee so that all views expressed thus far were taken into account. In respect of the next steps the committee noted that all of the possible options would need to be quickly but carefully considered, taking into account best use of the sites and a desire to minimise impact. It was noted that the Committee felt that sufficient time should be built into the process to ensure that people were fully briefed about, and able to comment on, the options as they emerged. Dr Hughes and the Chairman acknowledged the complexity of the issues and the need to provide people with as much information as possible. The Chairman stated that following consideration of the long list of options by the Stakeholder Group, the constrained list needed to be reviewed and refined so that appropriate options could be agreed in the future.

Following an earlier request at a meeting of the Stakeholder Group, a Committee Member requested an expanded map of flooding areas.

**RESOLVED:-** That –

- (i) the Consultative Committee's comments in respect of the Hampstead Heath Ponds Project –Design Flood Assessment be noted and;
- (ii) any additional questions be submitted in writing to the Superintendent, Hampstead Heath by no later than 10<sup>th</sup> April 2013 so that written responses could be provided ahead of the special meeting of the Hampstead Heath Management Committee on 29<sup>th</sup> April 2013.

**6. PROVISIONAL ANNUAL WORKS PROGRAMME 2014/15**

Simon Lee (Superintendent, Hampstead Heath) introduced a report before Members relative to a provisional list of cyclical projects being considered for Hampstead Heath in 2014/15 under the umbrella of the “additional works programme.” The Committee was advised that the draft cyclical project list for 2014/15 totalled approximately £0.67m for Hampstead Heath, as opposed to the figure of £0.78m specified in the report and which included Highgate Wood and Queen's Park.

Richard Litherland (City Surveyor's Department) invited the Committee to comment on the proposed list ahead of submission through the usual decision-making channels. He advised that the list reflected cyclical maintenance rather than improvement works and had been informed by a sound dialogue with the Superintendent of Hampstead Heath in order to maintain a collaborative approach to undertaking works on the Heath. In respect of some of the proposed works, it was noted that further work had been proposed at the Lido and the Athletics Pavilion, as well as a more strategic approach to footpath works.



In response to a question concerning funding of the proposed cyclical and major works at the Lido, Richard Litherland explained that the works were funded through different streams and that as the funding programme was reducing in scale, future funding constraints were likely to have a longer term impact on the volume of works that could be undertaken.

Following a query about how works were prioritised, the Committee was advised that a range of criteria were used to determine priority such as whether or not a building was Listed, when work had last been undertaken and how urgent works were. In respect of other issues such as the Pergola, whilst the Masterplan set out a phased approach to the works, the bid in the additional works programme would release money so that additional works could be undertaken.

In respect of the differentiation between cyclical and core works, the Committee was advised that as the core funding stream was limited, the additional works programme provided much needed additional funding. Following a question about remedial action in respect of the erosion of some pathways, the Superintendent advised that large areas of the Heath had been eroded as a result of the exceptional weather. Whilst acknowledging that this would be a significant piece of work, it was proposed that temporary fencing be erected to prohibit public access and thus enable the open spaces to recover.

**RESOLVED:-** That the Consultative Committee's views on the provisional list of works be submitted to the Superintendent or the City Surveyor's Department by no later than 29<sup>th</sup> April 2013.

7. **QUESTIONS**

There were none.

8. **ANY OTHER BUSINESS THAT THE CHAIRMAN CONSIDERS URGENT**

***The Lord Mayor's Tree Party***

The Chairman referred to the Lord Mayor's forthcoming tree party at The Mansion House on 25<sup>th</sup> June 2013, in aid of the Lord Mayor's Appeal. An event flyer was tabled by way of further information about the fundraising event.

***Deputy Chairman's last meeting, Deputy Michael Welbank***

The Committee noted that this would be Deputy Welbank's last meeting in his capacity as Deputy Chairman of the Consultative Committee. The Chairman commented on Deputy Welbank's life-long interest and love of Hampstead Heath and thanked him, on behalf of the Committee, for his valuable contributions throughout his 6 years' service as Chairman and Deputy Chairman. In closing, the Chairman wished Deputy Welbank well for the future and in his new role as Chairman of the Planning & Transportation Committee.

9. **DATE OF NEXT MEETING**

The next meeting of the Hampstead Heath Consultative Committee will take place on 8<sup>th</sup> July 2013.

**The meeting ended at 9.00 pm**

-----  
Chairman

**Contact Officer:**

Lorraine Brook,  
Committee & Member Services, Town Clerk's Department  
[Lorraine.brook@cityoflondon.gov.uk](mailto:Lorraine.brook@cityoflondon.gov.uk)  
Tel: 020 7332 1409

This page is intentionally left blank



<b>Committee(s):</b>	<b>Date(s):</b>
Hampstead Heath Consultative Committee	8 <sup>th</sup> July 2013
<b>Subject:</b> Update on the Hampstead Heath Ponds Project	<b>Public</b>
<b>Report of:</b> <b>Superintendent of Hampstead Heath</b>	<b>For Discussion</b>
<p><b>Summary</b></p> <p>This report provides an update on the progress of implementing the Hampstead Heath Ponds Project. It includes details of the revised timetable and expanded programme of consultation and the “Development of Options” process and how this is being implemented. It also includes details of environmental surveys that are taking place and an update on procurement of the construction contractor. The finalised Communications and Engagement Strategy is also attached.</p> <p><b>Recommendation</b></p> <p>That the views of the Hampstead Heath Consultative Committee be received.</p>	

## Main Report

### Background

1. Approval was given by the Court of Common Council on 14 July 2011 for the project to upgrade the pond embankments on the Hampstead and Highgate chains. The aims of the project are to reduce the current risk of pond overtopping, embankment erosion, failure and potential loss of life downstream; ensure compliance with the existing requirements of the Reservoirs Act 1975 together with the additional expected requirements under the Flood and Water Management Act 2010 while meeting the obligations of the Hampstead Heath Act 1871; and improving water quality. At the same time it seeks to achieve other environmental gains through, for example, habitat creation.
2. In May 2013 the Design Flood Assessment, produced by Atkins, was approved by the Hampstead Heath, Highgate Wood and Queen’s Park Management Committee. In the Design Flood Assessment, Atkins determined that whilst works are still essential to reduce the City of London’s liability and meet its duty of care to communities south of the Heath, the size of potential floods in “extreme rainfall events” is less than those derived by previous hydrology consultants. By approving this Assessment, Management Committee endorsed it as the basis for continuation of the Hampstead Heath Ponds

Project and development of the preferred design options that will be subject to wide public consultation later in the year.

### **Current Position and Project Timetable**

3. The Development of Options phase is now progressing. This started with Atkins drawing up an unconstrained list of options, in consultation with the Ponds Project Stakeholder Group (PPSG), Hampstead Heath Staff and the wider public. On Saturday 18 May formal presentations were made to the PPSG which included various conceptual sketches, hydrographs, cross sections and 3D visuals of the engineering options, which was well received by stakeholders.
4. Following this workshop, Atkins then circulated a Constrained Options Report which was consulted upon before a further workshop with the PPSG (due to take place on 13 July) after which another report will be produced. The final step in this process will involve one more workshop with the PPSG in September and then Atkins will produce a report with two options for formal consultation over winter with the public and stakeholders with intent of selecting a preferred option which will form the basis of a planning application to be submitted by the end of May 2014 and subject to consents, site works to commencing in the spring of 2015.
5. The process described above is the result of an expansion of the timetable following concerns that there was not enough time for proper, meaningful consultation with both the PPSG and with the wider public. The City of London has addressed these concerns by moving the more formal stage of the consultation back three months, now with an anticipated start date of late November/early December. The extra three months allows for more time to consult upon the Development of Options, a crucial phase in the project. This process is detailed in the flowchart – Appendix 1.
6. A revised programme (see Table 1 below) of activities and actions has been developed and has been supported by the independent Panel Engineer who has the statutory duty to ensure that the current reservoirs meet the appropriate design standards. The timetable remains challenging and it is possible it will need further revision as we move forwards and some of the “unknowns” are identified. Atkins has produced a detailed project programme which aligns with these key dates.
7. As discussed later in this report, the risk of a Judicial Review application remains and if this were to happen it could impact upon the timetable for the project. Similarly, the planning process or conditions onsite may also impact upon the project timetable.

Table 1 – Revised Programme

<b>Project Stage</b>	<b>Previous Programme</b>	<b>Updated Programme issued May 2013</b>
Problem Definition		<b>May 2013 – end of June 2013</b>
Atkins undertaking modelling to develop constrained options list to identify a short list of preferred design options.	May 2013	<b>May 2013 – end of July 2013</b>
Dialogue continuing with Heath Management Committee and other appropriate Committees / Stakeholders.		<b>May 2013 – end of June 2013</b>
Shortlist of Preferred Design Options presented to CoL for consideration and for formal consultation with the Heath Management Committee and other appropriate Committees / Stakeholders.	July 2013	<b>July 2013 – September 2013</b>
Procure and appoint 'preferred' contractor to assist in technical design preparation for 'preferred' option		<b>July 2013 – November 2013</b>
Wider Public Consultation	August 2013 – September 2013	<b>September 2013 – November 2013</b>
Preferred Option agreement by CoL and Heath Management Committee and other appropriate Committee's	January 2014	<b>November 2013</b>
Preparation of planning application		<b>February 2014 – April 2014</b>
Submission of Detailed Planning Application to Camden Council	End of February 2014	<b>May 2014</b>
Estimated Determination of Detailed Planning Application	August 2014	<b>November 2014</b>
Commencement of Works on Site (Phasing to be agreed)	October 2014	<b>April 2015</b>
Completion of Works	March 2016	<b>October 2016</b>

### **Stakeholder engagement**

8. The PPSG continues to meet monthly as well as with additional workshops as prescribed by the timetable. These meetings continue to be constructive and informative. With the PPSG's help and advice the project has been rebranded the Hampstead Heath Ponds Project. The project had previously gone under a number of different names and it was felt consistency would aid the wider public's knowledge and familiarity with the project. A distinctive brand for the project has also been developed which will be applied to all materials produced for public consumption.
9. The Communications and Engagement Strategy (Appendix 2) has now been finalised and details the timetable of activities that will take place to spread

knowledge of the project to the wider community. Heath Staff continue to lead 'pop up consultations' at regular intervals on the Heath reaching many different Heath users. Summer events will be targeted as a means of reaching as wide an audience as possible. A new leaflet has been prepared that will be circulated to houses locally, copies will be available at the meeting.

## **Surveys**

10. Specialist surveys set out below have been commissioned so that the Design team can fully understand the current position in terms of aquatic and terrestrial ecology, water quality and archaeological baseline studies. Additional surveys of trees, topography and ground conditions are also being commissioned.
  - Bird surveys – 2 visits completed 2 further to be undertaken over the next 3 weeks, a report will be drafted once the site visits are complete.
  - Great crested newt survey – initial pond assessment completed, focussed site visits undertaken on selected ponds over the next 3 weeks.
  - Bat survey – Currently confirming timetable.
  - Aquatic survey – Early season survey work completed Thursday 23rd May. Late season survey and fish survey programmed to take place in July. However as these require pond closures the dates are subject to change.
  - Archaeology – Museum of London Archaeology Service (MOLA) to complete report by the end of May.
  - Water quality – Atkins are undertaking these surveys.

## **Procurement**

11. Consultant appointments have been made along with placement of orders for the various survey works.
12. There has been a delay incurred in the tendering for the main contractor. This was caused when three out of four tenderers withdrew within a short space of each other during the first tender process for the contractor.
13. City of London officers have now started a new procurement process and are utilising the London Tenders Portal and a shortened version of the competitive dialogue process. It is now anticipated that the procurement dialogue process will take place in July through to September with participants submitting a tender proposal in October and the appointment will follow in November 2013.

## **Potential for Judicial review and other Legal challenges**

14. The possibility of a Judicial Review application remains. Based on previous statements, it is likely that this would focus on the relationship between Reservoirs Act 1975 and the Hampstead Heath Act 1871, and the assessment of risk / appropriate safety standards under national industry guidelines on which the project is based. It is not clear when such a challenge might materialised, this may be a judgement based on the final designs and whether

they are considered acceptable in terms of their impact on the Heath landscape. The City Corporation has received a letter from the Heath & Hampstead Society setting out advice that it has sought in relation to the ponds project. Any planning decision could also be the subject of further challenge.

### **Corporate & Strategic Implications**

15. The works support the strategic aim 'To provide valued services to London and the nation'. The scheme will improve community facilities, conserve/enhance landscape and biodiversity and contribute to a reduction in water pollution whilst meeting the City Corporation's legal obligations. The risk of any dam breach and serious downstream flooding of communities (and consequent harm to the City's reputation) is mitigated.

### **Implications**

16. The risk of embankment failure at Hampstead Heath is assessed as a high risk on the City of London Corporations Strategic Risk Register. In addition to the current measures to mitigate risks, there are other risks that also need to be considered, including the resources needed for on-going consultation and the potential threat of legal challenge that could still potentially delay the project.

### **Conclusion**

17. The design process is continuing, following the Design Flood Assessment approval by the Hampstead Heath, Queen's Park and Highgate Wood Committee in May 2013. The revised project timetable provides stakeholders and the wider public more time to participate in meaningful consultation which will assist the development and agreement of the design. In the meantime the appointment of the main contractor will be undertaken and environmental surveys on the Heath continue.

### **Appendices**

- Appendix 1 – Overview of options development process (flow-chart)
- Appendix 2 – Communications and Engagement Strategy

#### **Simon Lee**

Superintendent, Hampstead Heath

T: 020 7332 3322

E: [simon.lee@cityoflondon.gov.uk](mailto:simon.lee@cityoflondon.gov.uk)

#### **Jennifer Wood**

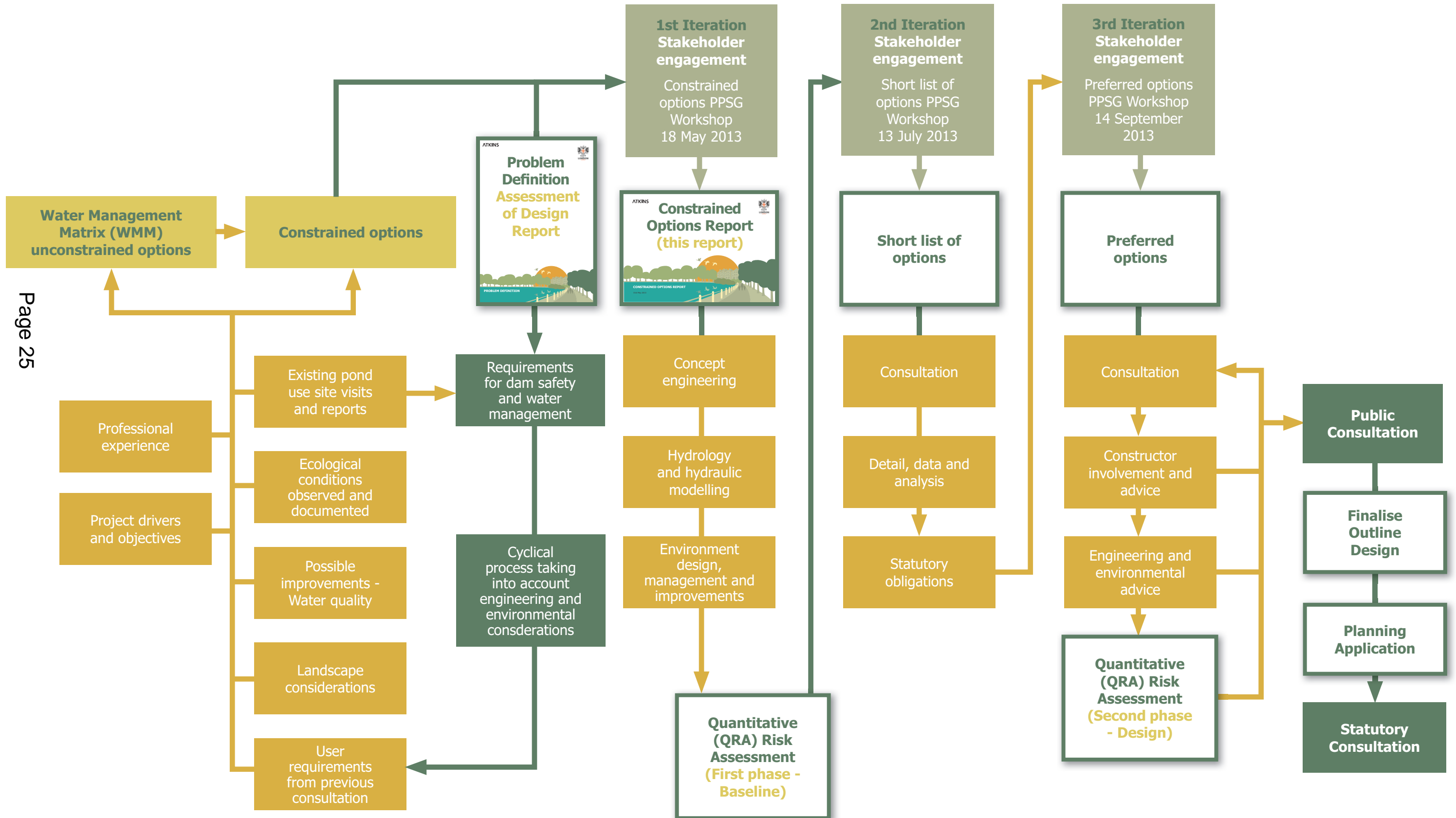
Ponds Project Communications Officer

T: 020 7332 3847

E: [jennifer.wood@cityoflondon.gov.uk](mailto:jennifer.wood@cityoflondon.gov.uk)

This page is intentionally left blank

# Overview of options development process



This page is intentionally left blank





# Hampstead Heath Ponds Project Communications and Engagement Strategy



# Contents

Chapter		Pages
<b><u>1.</u></b>	<b><u>Background to the Hampstead Heath Ponds Project</u></b>	<b>3</b>
<b><u>2.</u></b>	<b><u>Overview of the Communication and Engagement Plan</u></b>	<b>6</b>
<b><u>3.</u></b>	<b><u>Key Messages</u></b>	<b>8</b>
<b><u>4.</u></b>	<b><u>Target Audiences</u></b>	<b>9</b>
<b><u>5.</u></b>	<b><u>Methods of Communication</u></b>	<b>11</b>
<b><u>6.</u></b>	<b><u>Communication and Consultation Timetable with Activities</u></b>	<b>12</b>

## Background to the Hampstead Heath Ponds Project

Close to the centre of London, Hampstead Heath is one of the city's most popular open spaces, attracting in excess of 7 million visits per annum. On a busy day over 40,000 visitors enjoy the wealth of facilities that include a zoo, an athletics track, an education centre, extensive children's facilities, three swimming ponds and a Lido.

Hampstead Heath is not a public park such as Regent's Park or Finsbury Park, both of which were designed and intended to have a more formal or garden-like appearance. Neither, as a whole, can it be compared with the designed landscapes that are so familiar through the influence of Capability Brown. It is better compared with a National Park, in that it has a defined area but boasts a mosaic of habitats, including woodland, grassland, scrub and open water.

There are four chains of ponds. To the south are the Hampstead and Highgate valleys that have been dammed to create the Hampstead and Highgate ponds, both valleys eventually joining to feed the River Fleet. To the north there is the Golders Hill Park chain, which has been impounded at the lower end to create ponds in the designed landscape of the former Golders Hill Mansion, and the Heath Extension chain; both eventually join the River Brent.

### Management of Hampstead Heath

The foundation legislation, the Hampstead Heath Act 1871, brought the Heath into public ownership with the following obligations:

- 'Forever to keep the Heath open, unenclosed, unbuilt upon and by all lawful means to prevent, resist and abate all encroachment on the Heath and attempted encroachment and to protect the Heath and preserve it as an open space
- At all times to preserve as far as may be the natural aspect of the Heath and to that end to protect the turf, gorse, heather, timber and other trees, scrubs and brushwood thereon
- Not to sell, lease, grant or in any manner dispose of any part of the Heath
- To drain, level and improve the Heath, as far only as may be from time to time as requisite, with a view to its use for purposes of health and unrestricted exercise and recreation.'

The City Corporation took over title ownership and the responsibility for the management and protection of Hampstead Heath in 1989, and for making it available as open space.

Under the London Government Reorganisation (Hampstead Heath) Order 1989, two trust funds were established and two statutory committees created:

- The Management Committee is the committee which is responsible for the implementation of policies and programmes of work in relation to the Heath and directs the staff in regard to their management.
- The Consultative Committee makes representations to the Management Committee about any matter which affects or is likely to affect the Heath. It is chaired by the Chairman of the Management Committee, meets at least three times a year, and undertakes a regular programme of visits to the Heath.

The amount spent maintaining the Heath is £6.2 million pounds annually.

### **The Hampstead Heath Ponds Project**

The City as the owner/undertaker has responsibility for the pond dams. They commissioned a review of the hydrology and hydraulics of the structures to determine their compliance both with the Reservoir Act (1975), and the emerging Flood and Water Management Act 2010. The 2010 Act will modify the approach to assessment of flooding risk in the case of cascades of reservoirs as seen on the Heath.

In 2009 the review found that the dams on the Hampstead Heath ponds, that are subject to current Reservoirs Act legislation (Model Boating Pond, Highgate Men's Bathing Pond and Hampstead No.1 Pond) were classified as high risk structures, which in the event of failure would present a substantial risk to downstream properties and endanger lives.

The purpose of the Project is to safeguard the integrity of the dam structures in the face of extreme flood events, so as not to exacerbate the effect of flooding on the downstream residents, whilst at the same time safeguarding the landscape and natural beauty of Hampstead Heath. The work will take place on the Hampstead chain of ponds and the Highgate chain.

In addition three of the Heath ponds, the Mixed Pond in the Hampstead chain and the Highgate Men's and Kenwood Ladies Ponds in the Highgate chain, are designated inland bathing waters by DEFRA and need to comply with the EU Bathing Waters Directive of 2006. Consequently a further aim of the scheme was to investigate measures to improve water quality.

A design team, led by Atkins, was appointed by the city in 2012 and carried out a fundamental review of the hydrology of the site. They are now working with the City and stakeholders to seek a common understanding of the base situation and where the balance of risk lies. Building on this, possible solutions will be proposed, taking full account of the views and objectives of the various stakeholder groups who represent the local community of Heath neighbours and users.

### **Approach to the Project**

The City of London Corporation is determined that the project causes the least possible disruption to the Heath and protects the valued Heath landscapes, at the same time as safeguarding the communities who live around its borders and beyond to the necessary legal standards. Conserving the wildlife and the need for a cost effective solution are two other essential elements.

The project will conform to both the City's Vision for Hampstead Heath and the key objectives set out in the Hampstead Heath Management Plan.

### **Project Objectives**

Given the importance of the Project setting of Hampstead Heath, appropriate and sympathetic design is crucial and the following objectives have been identified for the project:

- Compliance with the Hampstead Heath Act 1871 foundation legislation including clauses relating to the natural aspect and state of the Heath;
- Compliance with the current and emerging reservoir legislation and the need to meet public safety requirements;
- An environmental led design outcome that integrates the engineering works into the landscape;
- The improvement of water quality and aquatic ecology reducing the occasional non-compliance with the EU Water Bathing Directive of 2006;
- The protection of features that contribute to the setting and potential opportunities to enhance the landscape;
- A sustainable approach that ensures the long term enjoyment of the Heath;
- Use as far as is practical of materials from sustainable resources;
- Employ bioengineering best practice and where practicable innovative methods and products;
- Compliance with relevant planning policies

### **The Importance of Communication and Engagement**

To achieve this balanced approach the support of the key stakeholders who are proactively involved in any proposed changes to the Heath, as well as the wider public, will be essential. Consequently this communication and engagement plan is central to the success of the project.

With this size of project, a certain amount of flexibility is required in the consultation and design phase however the City must proceed with the project and keep to an agreed timetable. This is set out in the final section on page 12.

The City of London aims to complete the project by 2017.

## Overview of the Communication and Engagement Plan

Effective communication and involvement is central to the success of the Hampstead Heath Ponds Project, both because of the importance of Hampstead Heath environmentally and historically and also because of the many stakeholders, from the local community through special interest groups, to the statutory agencies who are all understandably fiercely protective of the Heath.

Not only is it essential to ensure that anyone interested in the project has an opportunity to be involved and influence proposals, it is also important to be clear and open about the project, why it is necessary and its scope. It is also important to manage communications in the public domain positively and effectively.

For these reasons the communication and engagement plan has been developed to guide activities through all stages of the project. It sets out who will be engaged during the project, why, how and who by, where they will be engaged and when they will be involved. It has been designed to deliver a range of important outcomes, including:

- Inform and educate stakeholders, staff, residents and Heath users on the need and objectives for the project. Ensure these key audiences are kept informed and are provided with information and understanding of the key issues as and when required.
- Ensure communication channels with the stakeholders/residents are open; that they have sufficient information to understand the reason behind the project and are kept informed as to how they can become involved in the process. Update them on how their views/contributions are making a difference to the project.
- Ensure the wider public understand why the project is required and the benefits that will be derived, including educational benefits.
- Ensure that any concern or request for information is appropriately addressed.
- Ensure the press and media are informed and educated to promote balanced and accurate coverage. Provide regular updates and briefings and access to supporting information where possible, including any graphics, maps, photos and illustrations which may be of use.
- Ensure effects of the works are communicated to stakeholders, any interested party and the public throughout design and construction
- Seek views and feedback from Heath users throughout design and construction, ensuring all affected groups are able to see and comment on the proposals, temporary works and potential effects during construction.
- Facilitate communication using a range of techniques designed to reach and appeal to the various groups such as websites, media coverage, social media, e-newsletter, leaflets, posters, exhibitions, workshops and surveys.
- Keep a detailed log of all meetings, communications, responses and decisions made and provide feedback both internally to those involved with the project and externally to Stakeholders, any interested parties and the general public.
- Ensure views are incorporated into designs if possible and appropriate with feedback to involved groups to acknowledge their input.

## **General Principles**

Communication and engagement for a project of this kind need to be as participative as possible, trying to reach and involve everyone who will be affected by, might think they will be affected by, have an interest in, something to contribute to, or can influence the project.

This can include groups and individuals from the stakeholder groups, the wider community, including traditionally hard-to-reach groups, staff, relevant national and local special interest, client and consultant teams, statutory consultees, local, regional and national government authorities and agencies and politicians.

The key communication principles are:

- Open, honest and transparent
- Listening, understanding and being responsive
- Educational, timely and targeted
- Use a wide range of communication techniques to be inclusive and reach as many groups as possible

By following these key principles it is possible to develop trust and credibility and resolve issues as well as ensuring everyone involved has a clear understanding of the approach proposed and the resulting benefits.

## **Our Chosen Approach**

In order to have meaningful consultation with groups who are directly affected by the project, the Ponds Project Stakeholder Group (PPSG), was set up in July 2012. This is a body of people with knowledge and interest in Hampstead Heath established as a group to provide views and advice to the Hampstead Heath Consultative Committee in relation to the Ponds Project within the context of the Hampstead Heath Act 1871 and relevant reservoirs legislation.

Each member of the PPSG represents a wider group including residents associations and Heath user-groups, and the PPSG members are expected to act as a conduit of information back to their constituents. The PPSG plays a central role, but this needs to be supplemented by the wider communication process set out below. The City of London has also appointed a Strategic Landscape Architect to champion the natural aspect of the Heath and work with the PPSG and wider community, to inform the design process.

A wide range of regular, ongoing proactive activities are planned and a range of media is to be utilised throughout the project both communicating to key stakeholders and the community, such as a public website, leaflets, posters, exhibitions, media coverage and also gathering their views via workshops, regular group meetings and surveys.

Everyone who wants to will be given the opportunity to see and comment on the proposals, temporary works and potential effects during construction and there will be community and stakeholder meetings, consultations and other events throughout the project, including those required to obtain planning permission and other consents, with specialist input and involvement from the Design Team as appropriate.

## Key Messages

The chosen key messages are designed to explain the reasons for the project, progress and the benefits it will bring. Many of these key messages will be applicable to more than one group. Some, or all, of these messages will be used in publicity material and support materials produced for the project.

### Primary Messages

- The project is both to improve the safety of the dams to protect local communities downstream and, whilst doing so, to ensure the maintenance and, where appropriate, enhancement of the natural landscape of the Heath
- To meet the Vision and Mission set out in the Hampstead Heath Management Plan and adhere to the principles of the 1871 Hampstead Heath Act.

### Supplementary Messages

- The conservation of the natural aspect of Hampstead Heath is a priority
- The design of the modified dams must be sympathetic to the landscape
- This is essential work that needs to be done for the safety and protection of residents and businesses in the area
- It is in everyone's interest to carry out the project with minimal disruption to the Heath and the surrounding communities but it is a major project which will require a significant amount of work
- Hampstead Heath will still be open to visitors with only the essential areas not accessible while the works take place
- The project will bring long lasting benefits to the Heath including improving water quality and creating new habitats for wildlife
- This project is led by the City of London's duty of care as the responsible body and is following the advice of the Panel Engineer
- The project will bring about educational opportunities
- The existing ponds on the Heath are all man made and all have existing dams, some of which are several metres high
- Wherever possible materials from the Heath will be used to strengthen existing dams, creating new habitats for wildlife and reducing traffic movements.
- The City of London encourages everyone to take part in the opportunities provided to share their views on the project.



## Target Audiences

A wide range of groups and individuals need to be included in the development of the Hampstead Heath Ponds Project. Views will need to be sought from the general public and Heath users throughout the works and statutory approvals will need to be obtained.

Those who need to be involved, range from the official statutory consultees who have to be consulted on planning applications, through the key stakeholder and special interest groups, to business, neighbours and users of the Heath and the wider communities.

Groups specific to Hampstead Heath include:

- Hampstead Heath Consultative and Management Committees
- PPSG with representatives from Heath users and local resident groups
- Staff and volunteers
- Other advisory and user groups, including: Sports Advisory Forum, Sexual Activity Working Group, Swimming Facilities Forum,
- Other neighbours and residents, including: Lissenden Gardens Residents Association, Hampstead Garden Suburb Residents Association, Queen's Crescent Community Association, LB Camden's relevant Neighbourhood Fora
- Affected Local Authorities, including the London Borough of Camden
- Wildlife and Science groups, including: The London Natural History Society, The Hampstead Scientific Society, RSPB
- Other recreational groups, including: Heath for Feet, Camden Cycling Campaign, Kennel Club, Hampstead and District Ramblers, London Orienteering Klubb, Highgate Harriers, Hampstead Rugby Football Club, London Heathside Athletics Club, The Camden History Society
- Religious and ethnic groups
- Business interests, including British Military Fitness
- Local, regional and national politicians
- Local schools and youth groups
- Hard to reach groups
- Pressure groups
- Individual members of the public

The bodies that have to be consulted on relevant planning applications are:

- Defra
- British Waterways
- Commission for Architecture and the Built Environment
- Civil Aviation Authority
- Department for Transport
- Environment Agency
- English Heritage
- Garden History Society
- Health and Safety Executive
- Highways Agency
- The London Borough of Camden and other Local Planning Authorities including Greater London Authority and Local Highway Authority
- Natural England

- National Amenity Societies, including Ancient Monuments Society, the Council for British Archaeology, the Georgian Group, the Society for the Protection of Ancient Buildings, the Victorian Society and Twentieth Century Society
- National Air Control Transport Services and Operators of Officially Safeguarded Civil Aerodromes
- Rail Network Operators
- Sport England
- Theatres Trust
- Thames Water
- Any other regulatory or advisory publicity/consultation requirements.

## Methods of Communication

A range of different methods of communication will be used to reach our various target audiences.

Central to our approach is the project website: [www.cityoflondon.gov.uk/pondsproject](http://www.cityoflondon.gov.uk/pondsproject), which is publicised on the Heath and in literature relating to the project. This website is updated regularly with the latest news. Documents and reports with background information to the project are found here.

Regular electronic communication such as the e-newsletter, emails, Facebook and Twitter, will be balanced with more traditional methods of communication such as posters, exhibitions, and leaflets. The regular Ham & High column by the Chairman of the Heath's Management Committee will be a key regular channel of communication as well as press releases at milestones throughout the project. Leaflet drops to the communities around the Heath will be utilized to inform people of the consultation timeline and as a call to action of how they can give their views.

The Heath will be used as a communication tool. Signs will be placed at busy spots and will be regularly updated with clear and useful information. Self-guided walks of the ponds will be sign posted informing people of the project at the specific sites. We will also make use of public events already taking place on the Heath for consultation and to publicise the project. When there are designs to consult on, a mobile exhibition will be developed and will move around key locations near the ponds. In addition we will continue to hold 'pop-up' or 'speed' consultation events every two weeks on the Heath.

Hampstead Heath staff will also be essential to the communication process, both as experts on the Heath and as on-the-ground ambassadors for the project. Staff who will be working closely to the project will be kept fully briefed should they need to respond to questions from the public. Other staff will be made aware of the project and why it is necessary and be briefed throughout the duration of the project. A staff workshop similar to the Ponds Project Stakeholder Group Workshop will be held at each stage of the project. The Heath's volunteer group, Heath Hands will also be engaged in the process and asked to give out leaflets and information at events.

Communication channels will be kept open between City of London and campaign/pressure groups to ensure they have the most accurate information on the project.

## Communication and Consultation Timeline with Activities

### Jan 2012 – Throughout duration of HH Ponds Project

*Inform Heath users and communities around Heath on project stages and reason for development.*

- Brief Ponds Project Stakeholder Group (PPSG) - Monthly;
- Brief Hampstead Heath Consultative Committee (HHCC) – every meeting;
- Posters on the Heath - Quarterly;
- Press Release – Key Milestones;
- Newspaper adverts – Key Milestones
- Leaflet Drop – twice yearly;
- Pop-Up Consultation - Fortnightly;
- E-newsletter – Bi-Monthly;
- Twitter - Weekly;
- Facebook - Weekly;
- Information Stands – At all main events

### March – April 2013: Completion of Fundamental Review

*Communicate the results of the fundamental review and how this will impact on the project to PPSG, HHCC, HHMC and wider public*

- Press Release; Email to HH Staff; Website; Twitter- 14 March
- Brief PPSG – 18 March
- Brief HHCC – 8 April
- Responses to PPSG questions – 12 April
- Report to HHMC – 9 May
- E-newsletter – May

### May 2013: Review of long list of all options and refine to a long list of technically feasible options

*The Design Team uses information provided by PPSG, HH Staff and wider public in first phase of consultation (which took place in January/February 2013) to produce a matrix of all options which is then reviewed by the PPSG and HH Staff. SLA and Atkins then work with PPSG and HH Staff to refine this list of feasible options.*

- Workshop with PPSG and HH Staff led by SLA – 18 May

### June 2013: First review of Constrained Options Report

*The Design Team produces a Constrained Options report following the May workshop which is then issued to the City and to the PPSG for review. As well as being reviewed by Stakeholders this report will be communicated to Heath users and the wider public for their comments back on the options to inform the design team in narrowing this to a short list.*

- Issue Report to PPSG and HH Staff; Press Release; Website; Facebook; Twitter;
- Posters on Heath; Newspaper adverts – 8 June
- Brief PPSG – 17 June

### July/August/September 2013 : Second and third review of constrained options

*The Design team enter into a cycle of producing and refining their Constrained Options following the comments received from PPSG, HH staff and wider public. PPSG and HH Staff are engaged through workshops and regular briefings.*

- Workshop with PPSG and HH staff led by SLA – 13 July
- Brief PPSG – 22 July

Email to HH Staff – 22 July  
Workshop with PPSG and HH staff led by SLA – 14 September

### **October- November 2013: Arrival at two or three preferred options**

*The Design team produce a report detailing the two preferred options per chain which will be taken to public consultation.*

Brief PPSG – 14 October  
Email to HH staff – 15 October  
Brief HHCC- 28 October  
Brief HHMC- 11 November

### **November 2013– February 2014: Public Consultation**

*A full public consultation on the preferred options takes place between 26 November 2013 and 17 February 2014. This will be advertised in advance.*

Press Release; Newspaper adverts; Posters on Heath; Website; Facebook;  
Twitter: E-newsletter; Leaflet Drop; Exhibitions; Surveys – From mid-October

### **February 2014: Analysis of public consultation**

*The Design team analyse the results of the public consultation and produce a report which details the preferred option. This will be communicated to the PPSG, HH staff, Heath users and to the wider public.*

Brief PPSG and HH Staff; Press Release; Posters on Heath; Website;  
Facebook; Twitter: E-newsletter – February date TBC

### **February – April 2014: Design Phase**

*The Design Team work up a design in preparation for the planning application.*

Brief PPSG and HH Staff; Press Release; Website; Facebook; Twitter; E-newsletter – April TBC

### **May – November 2014: Planning phase**

*The Design Team submit their detailed design to Camden Council for planning permission. During this time there will be a period of statutory consultation as required by planning law.*

Brief PPSG and HH Staff; Press Release; Website; Facebook; Twitter; E-newsletter – May TBC

### **January– March 2015 : Detailed Design and Preparation for Construction**

*A final detailed design is worked up and the Design team work with the appointed Contractor to prepare for the construction phase*

Brief PPSG and HH Staff; Press Release; Website; Facebook; Twitter; E-newsletter – March TBC

### **April 2015: Work starts on site**

*The construction of the scheme begins (phasing to be agreed). During the construction period there will be regular communication with Heath users and the communities who live in the surroundings updating them with progress and any information they may require such as restricted access to areas.*

Brief PPSG and HH Staff at regular intervals; Press Release; Website;  
Facebook; Twitter; E-newsletter – April – end of project TBC

This page is intentionally left blank

<b>Committee(s):</b>	<b>Date(s):</b>	
Hampstead Heath Consultative Committee	8 <sup>th</sup> July 2013	
<b>Subject:</b> Management Work Plan for the Sandy Heath Ride	<b>Public</b>	
<b>Report of:</b> Superintendent of Hampstead Heath	<b>For Discussion</b>	
<p><b><u>Summary</u></b></p> <p>This report presents a management work plan for the Sandy Heath ride.</p> <p><b>Recommendation</b></p> <p>That the Consultative Committee views on the detailed management work plan for Sandy Heath Ride be received.</p>		

## **Main Report**

### **Background and current position**

1. In order to manage the Heath, it is necessary to prepare detailed documents stating how each area will be managed, in line with established policies. Such documents will then feed into the annual work programme. Management work plans are being prepared for key areas of the Heath; they will last for ten years, and will be reviewed thereafter, although alterations may be necessary sooner if unforeseen events arise.
2. Plans for the Upper Vale of Heath, the Viaduct Pond, Seven Sisters ponds, Third Hedge, Springett's Wood, Orchard, South Meadow, Sandy Heath ponds, and Sandy Heath and Flagstaff Gorse areas have previously been presented to the Management and Consultative Committees. This report presents one more plan, for the Sandy Heath ride site.

### **Proposals**

3. The background to the Sandy Heath Ride Management Work Plan and elements of work prescriptions are set out below:
  - Sandy Heath ride consists of a wide path with a band of grassland and scrub graduating to woodland on each side.
  - Rides provide fringe habitat for invertebrate, birds and mammals alike, with flowering plants providing nectar sources and scrub providing foraging for birds and mammals. A greater number of species are thought to inhabit the first 10 metres of woodland or ride edge than inhabit the remainder of the woodland.

- Sandy Heath ride is located on the western side of Spaniards road towards the west of Hampstead Heath.
  - The Sandy Heath ride currently represents the only actively managed ride area on the Heath. No other such ride sections exist on the Heath with paths running through either short mown grassland or through wooded areas with little or no graduation from short vegetation to trees.
  - The site should be managed in rotation to ensure a mosaic of heights and age structures to provide a variety of conditions for invertebrates and birds. It is recommended that the current rotation cycle of 5 years should be continued. Without management a ride would eventually become impassable or surrounded by tall trees.
  - A 1m-3m non-linear strip along the vegetated fringe of the central path should be cut on a yearly basis to allow shorter herbage and wild flowers to flourish.
  - It is proposed to remove 2 non-native trees from 2 sections of the ride in 2014 and 2016. These trees are relatively young and their removal would increase light levels.
  - A review of 2 possible further non-native trees (turkey oak) for removal should be made in 2014 prior to management works the following year. These trees are semi-mature.
4. Detailed proposals are listed in Section 3 of the Work Plan, which is attached as Appendix 1.

### **Financial and Risk Implications**

5. Activities included within the management work plan will be undertaken using the Hampstead Heath local risk budgets. There is a reputational risk in not pro-actively managing the natural aspect of the Heath. Left unchecked the mosaic of diverse habitats for which the Heath is renowned would be lost to secondary woodland cover and scrub.

### **Legal Implications**

6. The City has a legal duty under the Hampstead Heath Act 1871 to maintain the natural aspect of the Heath.

### **Strategic Implications**

7. The proposals link to the theme in the Community Strategy to protect, promote and enhance our environment.
8. They also link to the Open Spaces Department Plan through the Strategic Aim to 'adopt sustainable working practices, promote the variety of life (biodiversity) and protect the Open Spaces for the enjoyment of future generations', and the Improvement Objective to 'ensure that measures to promote sustainability and biodiversity are embedded in the Department's work'.



9. These works also fulfil Essential Actions in the Part 1 Management Plan, including:

*Retain and enhance the Heath's habitats and natural resources to enable continued quiet enjoyment and appreciation of the natural world by its visitors.*

*Manage the Heath's woodlands and scrub to enhance their nature conservation value and improve their distinctiveness*

## **Conclusion**

10. A Ten-year management work plan is presented for one area of the Heath: the Sandy Heath ride site.
11. The establishment of the aims and practices for managing these areas will feed into the annual work programmes for the appropriate years. The management work plans are subject to review at the end of the 10-year period and sooner if unforeseen events occur.

## **Appendices:**

*Appendix 1: Draft 10-year Management Work Plan for Sandy Heath ride.*

## **Contacts:**

*Adrian Brooker*  
*Asst Ecologist*  
[Adrian.brooker@cityoflondon.gov.uk](mailto:Adrian.brooker@cityoflondon.gov.uk)

*Jonathan Meares*  
*Highgate Wood & Conservation Manager*  
[Jonathan.Meares@cityoflondon.gov.uk](mailto:Jonathan.Meares@cityoflondon.gov.uk)

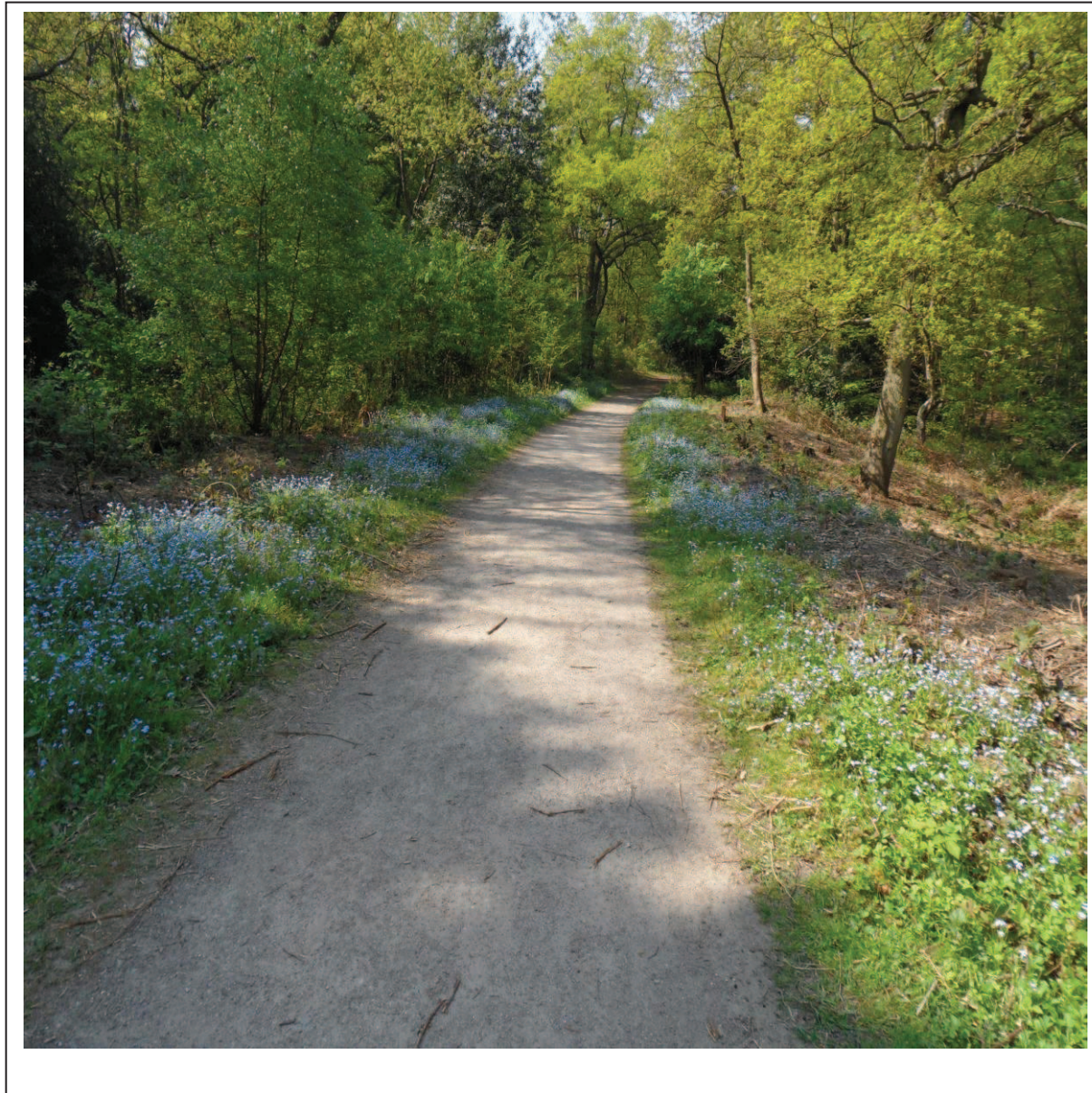
This page is intentionally left blank

# APPENDIX 1

## Sandy Heath Ride Management Work Plan

Adrian Brooker

April 2013





# Sandy Heath ride site

## 1.0. Site description : Figure 1





## 1.1 Location

The Sandy Heath ride site is located on the western side of Spaniards road towards the west of Hampstead Heath. The site is located in an area widely known as Sandy Heath and is a largely linear site following the line of the old Sandy road which is currently a metalled pathway running NE to SW. The centre of the Sandy Heath ride site is at grid reference 526,512; 187,103 and covers an area of approximately 0.74 hectares. The 2009 Hampstead Heath vegetation survey shows the site as being in compartment 1183.

The approximate compartment boundary can be seen in figure 1. The Sandy ride site is bordered by secondary woodland to the east and west with the Sandy ponds to the south. The northern end of the ride abuts Hampstead lane near the Spaniards Inn.

The area is unenclosed and it is only the vegetation that provides a barrier to access.

## 1.2 Geology, Soils, Hydrology

The majority of the sandy ride site is located on an area of Bagshot sand although from geology maps the section towards the North-East end may be on an area of Stanmore gravel. The main path running along the length of the ride is relatively flat. However either side of the path the Sandy ride site has a mixed topography. Some sections are in hollows or dips and others are where the ground rises up or is higher than the adjacent path.

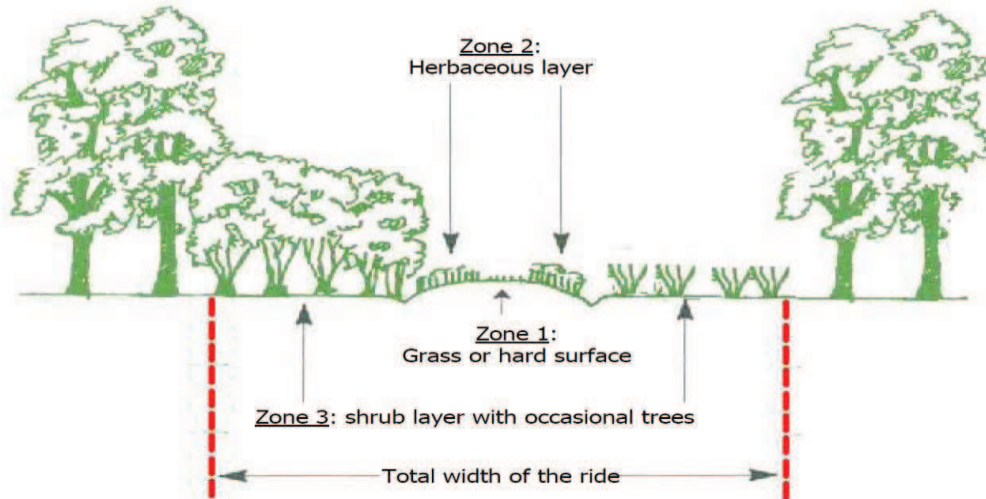
## 1.3 Ecology

A track or path becomes a ride when it is wide enough for a gap in the canopy to allow sunlight to reach the ground. Rides usually consist of a number of zones graduating from short turf to canopy trees

The Sandy site is typified by a man-made path running through the centre; this is fringed by a section of shorter low herbage which is approximately 1-2m wide. A section of taller herbage and scrub then occupies 10-15m which buffers onto mostly secondary woodland (see cover photo). Some standard trees are present in locations along the ride. The ride site receives sun in varying degrees and locations throughout the day with the side north of the path generally receiving more hours of sunlight than the southern part. The trees within the ride site and those fringing cast shade particularly to the North-eastern and south-western end sections. The centre part is largely sunny throughout the day.

Rides provide fringe habitat for invertebrate, birds and mammals alike, with flowering plants providing nectar sources and scrub providing foraging for birds and mammals. A greater number of species are thought to inhabit the first 10 metres of woodland or ride edge than inhabit the remainder of the woodland. Studies have shown that rides running in an east to west line are in sunlight longer than north-south rides and in general warmth and sunlight promote the greatest wildlife benefit (Forestry Commission, 2005<sup>1</sup>). Without management a ride would eventually become impassable or surrounded by tall trees. The greatest benefit from a ride is gained when the width of a ride is greater than the height of the adjacent canopy. The ride should also be non-linear if possible as this will maximise the woodland edge increasing habitat diversity.

Figure 2: An example cross section of an ideal ride for biodiversity. (Forestry Commission)



Along the length of the ride there are quite varied vegetation characteristics. Bramble is ubiquitous along the length of the ride and patches of nettle and bracken are also found in large quantities to the east. The vegetation fringing the main path is quite floristically rich with red campion, forget-me-not, garlic mustard and species of hawkbit, hawkweed and cats ear. Foxglove is common along the ride growing in large numbers particularly in the central area of the ride. Other species found include hogweed, burdock and wood avens. Wood sage was previously found in the centre of the compartment but was not recorded in 2012.

This varied and flower rich vegetation is good for butterflies such as orange tip, which commonly frequent the ride in spring.

A large specimen of Midland hawthorn exists in the eastern section as do mature specimen hollies to the west. Other trees growing along and within the ride include large oaks, ashes and beeches. Non-native turkey oak, sycamore and Norway maple are also present. Suckering elm grows throughout the compartment. Outside the ride compartment boundary, numerous mature oak, horse chestnut and beech trees grow, some of which appear in the 1870's map shown in figure 3 and appear to be in the approximate position of an avenue discussed in section 1.5 below.

A few gorse bushes remain in the compartment but the few plants of heather that existed up until 10 years ago do not appear to remain.

A woodcock was disturbed during survey work in Dec 2012, sheltering in the scrub section of the ride. Due to tree shading and public use, much of Sandy Heath is lacking in a thick understory suitable for woodcock to shelter and the sandy ride provides this habitat as well as nesting opportunities for other birds.

Rabbits occur which can be detrimental for seedling growth, but they may maintain open grassland in nearby areas.

Small balsam grows in extensive patches in shadier areas of the compartment.

#### 1.4 Public and educational uses

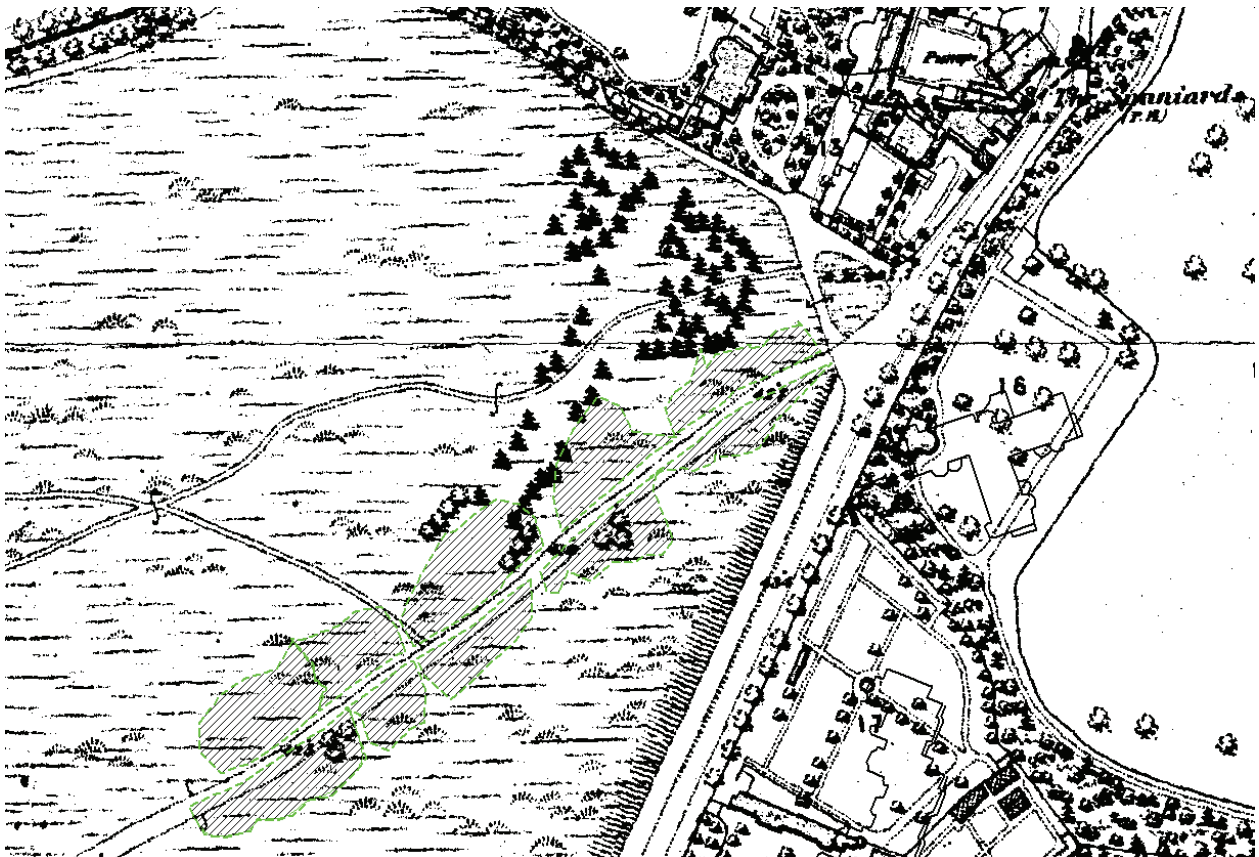
The path running through the ride is regularly used as the track running through the patch is the main path joining Sandy road with Spaniards road and used mainly by walkers. There is very infrequent educational use of the area.

## 1.5 History

The compartment would have been much more open heathland until the last 50 years or so with more extensive patches of grassland, bare ground and gorse. This heathland would probably have been present prior to the extensive sand digging that took place over large parts of Sandy Heath for several years until 1871. The sand digging however produced a largely barren landscape from which heathland re-established. This then gradually developed into scrub and woodland through succession in the last 50 years or so due to a reduction in grazing when it became public property.

On the northern fringes of the compartment numerous mature trees grow, including 2 horse chestnuts within the compartment boundary. A number of these trees appear to form the beginnings of a largely pine planted avenue (planted after but in the region of 1734; British History Online<sup>2</sup>) leading up to the area known as Turners firs after the local landowner John Turner who was also part responsible for the original sandy roadway, now the location of the Sandy ride. This remained open to vehicles as a public road until 1924 and was a main thoroughfare linking up with North End (Farmer, 1984<sup>3</sup>).

Figure 3: C.1870's map showing Firs Avenue and current ride compartment (hatched)



The above figure 3 shows the avenue of pine trees (dark shaded trees) and also a number of other marked trees (unshaded) some of which are believed to still be present.



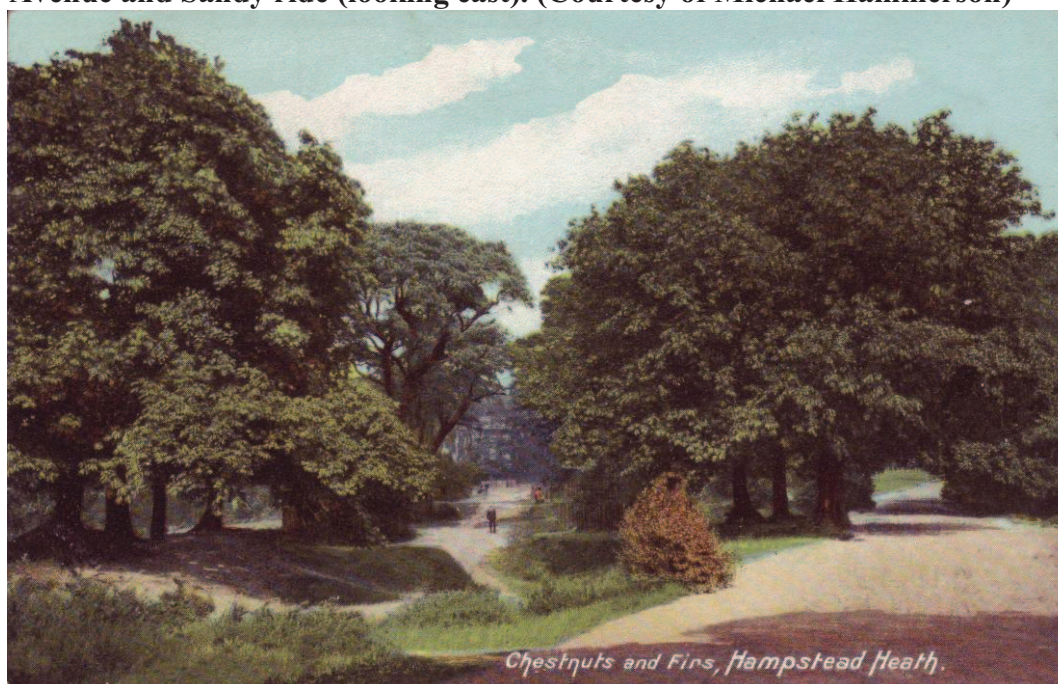
Figure 4 below shows the fir avenue in approximately 1910 and shows Turners 'The Firs' house in the background which is now 3 separate dwellings called Casa Maria, the Chantry and the White house.

Figure 4: **Firs Avenue and 'The Firs' house. C.1910 (courtesy of Michael Hammerson)**



The postcard below is believed to show the junction of the firs avenue and where it joins the existing sandy road/ride. Of interest are the trees to the right of the picture which are believed to be in the location where 2 mature horse chestnut trees are currently found.

Figure 5: **Firs Avenue and Sandy ride (looking east). (Courtesy of Michael Hammerson)**



The site has been actively managed over the last 10 years and has been under a 5 year cyclic regime whereby a section is coppiced with selected trees removed and bramble grubbed out. The centre of the ride site has also been scythed or mown once during mid-summer to prevent encroachment onto the path.



## **1.6 Natural and human-induced trends**

The site is bordered by secondary woodland and trees frequently seed in bare areas. If not managed the open areas would soon develop in scrub and then woodland

## **1.7 External influences**

In the vicinity of the Sandy Heath ride in the pits and hollows from the aforementioned sand digging there is erosion caused by bike riding. In areas of newly managed ride cycle tracks have occurred taking 'advantage' of the newly opened areas.

## **2.0. Evaluation**

### **2.1 Natural landscape**

Rides can provide a varied and flower rich vegetation for a variety of invertebrates and the Sandy ride due to its aspect and varied topography provides opportunities for flora and fauna of both scrub and open habitats. Rides should be managed in rotation to provide structural diversity and a variety of microclimates. The Sandy ride has been actively managed as a ride for nearly 10 years and has a good diversity of structure and established flora. The number of trees growing within a ride should be limited otherwise too much shade is cast for flowering plants to thrive successfully. The Sandy ride has a number of non-native tree species which cast shade and can reduce the floristic diversity.

No other such ride sections exist on the Heath, with other paths running through either short mown grassland or through wooded areas with little or no graduation from short vegetation to trees.

### **2.2 Public and educational uses**

Due to its location little educational use is possible but the ride provides a much used pedestrian link from the Spaniards to North End.

### **2.3 History and built environment**

The site is located on the old 'Sandy road' and should be maintained as a thoroughfare.

### **2.4 Overall vision**

**Maintain a woodland track with a graduation of vegetation from short turf to canopy trees.**

Encourage the growth and spread of wildflowers for invertebrates

Manage on rotation to allow for a variety of different vegetation heights and types throughout the section.

Maintain access along the ride section.

## **2.5 Relevance to achieving the 2007-2017 Hampstead Heath Management Plan**

Overriding Objectives, Essential Actions and Aspirational Goals from Part I of the Hampstead Heath Management Plan which are particularly relevant to the management of the Flagstaff and Sandy Heath gorse sites are as follows:

**NL1:** Retain and enhance the Heath's habitats and natural resources to enable continued quiet enjoyment and appreciation of the natural world by its visitors.

The following policies from the Natural Landscape chapter of the Part II Management Plan for the Heath are particularly relevant to the Sandy Heath ride site

Policy 16: The existing areas of woodland and scrub will be managed to protect and enhance their nature conservation importance and improve their distinctiveness.

Policy 19: Woodland structure will be diversified by creating further glades, undertaking thinning and coppicing, and possibly pollarding.

Policy 20: Woodland edge habitat, i.e. a graduation from trees or shrubs to long grass, will be encouraged.

### 3.0. Prescription and work programme

The site should be managed in rotation to ensure a mosaic of heights and age structures to provide a variety of conditions for invertebrates and birds. It is recommended that the current rotation cycle of 5 years should be continued. This rotation is subject to review. Due to the different aspect and terrain each section will have slightly different vegetation but should consist of a mixture of scrub and wildflowers. In order to increase the structural diversity the ride is actually divided into 10 definable sections with 2 specified sections to be coppiced in each year.

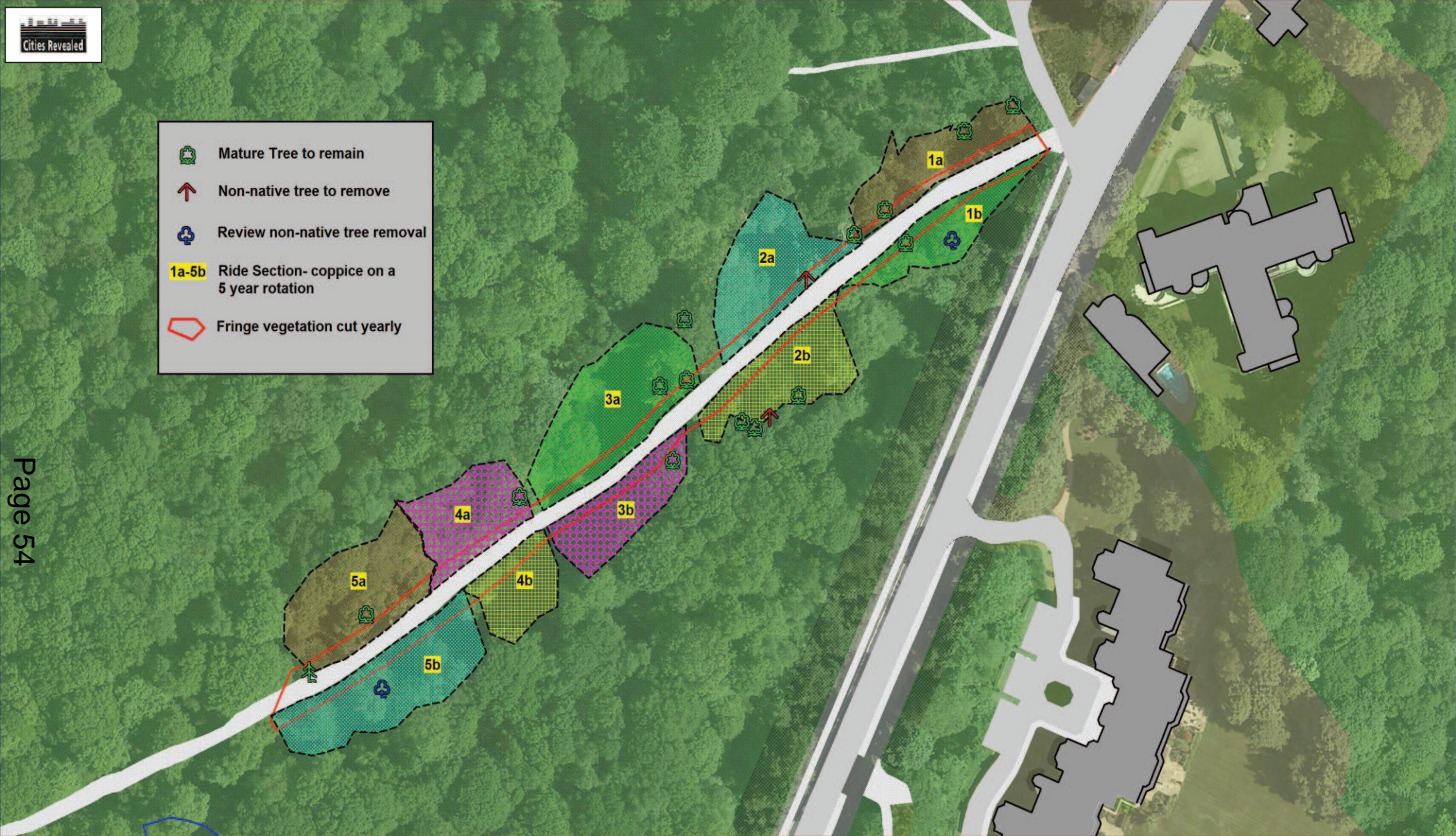
Young and sapling trees within each compartment should be coppiced during each cycle and large bramble growth grubbed out. Any non-native saplings should be grubbed out.

Selected larger non-native trees within each section should ideally be removed to increase light levels to each section. There should be a periodic review (10 years) of the trees on the fringe of the ride section to ensure lateral limbs do not begin to cast too much shade. Lifting of these limbs may then be necessary. It should not be necessary to remove any other trees from the ride sections, but any natural loss or decline would not be detrimental to the ride habitat.

A 1m-3m non-linear strip along the vegetated fringe of the central path should be cut on a yearly basis to allow shorter herbage and wild flowers to flourish.



Figure 6: Sandy Heath Ride 2013




Page 54







### 3.1 Regular management tasks

#### Sandy Heath Ride Site Objectives

Objective	Prescription	frequency	Month(s)	Years	Who by	Priority : low, medium or high
Rotational coppice to maintain vigour and different age ranges. 1a-5b.	Coppice or grub trees in ride section <b>1a</b> + <b>5a</b> . Grub out mature bramble + rake site. If possible one section should be cut early winter and the 2 <sup>nd</sup> late winter.	Every 5 years	October-February	2013 +2018	Cons Team/ Volunteers	High
	Coppice or grub trees in ride section <b>2b</b> + <b>4b</b> . Grub out mature bramble + rake site. If possible one section should be cut early winter and the 2 <sup>nd</sup> late winter.			2014 +2019		
	Coppice or grub trees in ride section <b>1b</b> + <b>3a</b> . Grub out mature bramble + rake site. If possible one section should be cut early winter and the 2 <sup>nd</sup> late winter.			2015 +2020		
	Coppice or grub trees in ride section <b>2a</b> + <b>5b</b> . Grub out mature bramble + rake site. If possible one section should be cut early winter and the 2 <sup>nd</sup> late winter.			2016 +2021		
	Coppice or grub trees in ride section <b>3b</b> + <b>4a</b> . Grub out mature bramble + rake site. If possible one section should be cut early winter and the 2 <sup>nd</sup> late winter.			2017 +2022		
Maintain access and floristic edge to the ride. 	Mow or scythe a 1m-3m non-linear strip along both edges of the ride section.	Every Year	July	All	Cons Team/ Volunteers	High

### 3.2 One-off tasks

Objective	Prescription	Month(s)	Year	Who by	Priority	Est. cost
Remove non-native tree to increase light levels. 	Remove sycamore from section 2b.	October-February	2014	Cons Team	Medium	Local Budget
Remove non-native tree to increase light levels. 	Remove Norway maple from section 2a.	October-February	2016	Cons Team	Medium	Local Budget
Review removal of non-native tree 	Review + possibly remove non-native Turkey oak from section 1b.	October-February	2015	Cons Team	Medium	Local Budget
Review removal of non-native tree 	Review + possibly remove non-native Turkey oak from section 5b.	October-February	2016	Cons Team	Medium	

Page 56

### 4.0 Review

Author	Date	Task	Observation, event or alteration to task

### 5.0 References

1. Forestry Commission. 2005. Managing woodland open space for wildlife. English woodland grant scheme. Operation Note 011.
2. British history online. 2013. Sourced from 'Hampstead: North End, Littleworth, and Spaniard's End', *A History of the County of Middlesex: Volume 9: Hampstead, Paddington* (1989), pp. 66-71. Available at [www.british-history.ac.uk/report.aspx?compid=22641](http://www.british-history.ac.uk/report.aspx?compid=22641)
3. Farmer A, 1984, Hampstead Heath, Historical Publications Ltd.

Committee(s):	Date(s):	
<b>Hampstead Heath Consultative Committee</b>	8 <sup>th</sup> July 2013	
Subject: <b>Progress Report on the Enhancement of the Landscaping Works to the Bull Path and Surrounding Area at Parliament Hill Fields</b>		Public
Report of: <b>Superintendent of Hampstead Heath</b>		For Discussion
<p><b><u>Summary</u></b></p> <p>This report informs members on the progress of the landscape enhancement works to the Bull Path and surrounding areas. The works was undertaken by the keeping staff at Parliament Hill supported by Heath's tractor driving team.</p> <p>The report updates members on the future works planned for Winter/Spring 2013/14.</p> <p><b>Recommendation</b></p> <p>That the Consultative Committee note the successful implementation of the landscape enhancement scheme and provide their views on the future works for 2013/14 as set out in the report.</p>		

## **Main Report**

### **Background**

1. The City of London Corporation has a duty under the foundation legislation, the Hampstead Heath Act 1871 to maintain the natural aspect of the Heath. An aspirational goal set in the Hampstead Heath Management Plan 2007-2017 for the Parliament Hill Triangle is to:

*“Improve the natural appearance of this area and enhance it as the major gateway to the Heath. This will include the entrances from Highgate Road, Gordon House Road, Savernake Road and Nassington Road”.*

### **Reducing the Municipal Appearance**

2. As part of a Heritage Lottery Fund bid in 2007, a master plan for the Parliament Hill Triangle was agreed by the Management Committee. Although the bid was unsuccessful, the master plan provided a blue print for the future management of this important gateway to the southern part of Hampstead Heath. Up to this point, the development of the Parliament Hill Triangle had been undertaken on an ad-hoc basis with individual projects being implemented with little consideration to the overall impact on the area.
3. This has led to the area having a very different feel to the remainder of the Heath, characterised by municipal fencing, ornamental shrub plantings and entrances with no obvious connection to the wider Heath. There is no genuine

sense of arrival and welcome for visitors to an open space of such historical importance.

4. During the past six years the following works have been implemented as projects approved in the annual work plan for the Parliament Hill Triangle:
  - Removal of the mixed planted ornamental shrub border in front of the café together with dismantling of the chestnut wooded fencing and creating grass meadow area.
  - Planting of native hedging whips (buckthorn, blackthorn, hawthorn, rose species etc. in the cricket enclosure to screen the new William Ellis School building and provide a habitat for invertebrates and nesting birds
  - Relaxation of the mowing regime and the encouragement of longer growing areas which are now managed as part of the Heaths overall grass land management policy.
  - Spray tar and chip gravel of the tarmac paths in front of the café and Gordon House Road entrance.
  - Introduction of three wild flower meadows, above the athletics track, Dukes Field and the Parliament Hill Bandstand.
  - Landscape enhancement works at Gordon House Road entrance and in front of the education centre.

### **Current Position**

5. The Bull Path, as it is known locally, is one of five major entrances into the Parliament Hill Fields area of Hampstead Heath. The pathway had a municipal appearance, with a densely planted ornamental shrub border; an unwelcoming entrance off Highgate Road and a “tunneling effect” created by metal railings and hawthorn hedge either side of the path – Photographs 1 and 3.
6. In order to take the concepts of the Parliament Hill Triangle master-plan forward, a detailed vision for the Bull Path and surrounding areas, including proposals, plans and interpretation boards was produced by DCLA Limited and Manor Creative, appendices 1-3. The overall driver was to bring the rural character of the Heath into the Parliament Hill area and reducing its municipal appearance.
7. Work began in February 2013 to clear the non-indigenous shrub border leaving the large oak tree, selected smaller trees and native shrubs. All plant material was shredded on site and disposed of by taking to London Borough of Islington, Hornsey Road, off Holloway Road recycling depot. 150 linear meters of 1m high black metal fencing has been removed and is in the process of being recycled.
8. The following works were undertaken and finished in late Spring 2013, for a comprehensive plant list see appendix 4:



- To provide privacy to William Ellis School, a 1.3m high woven screen was erected along the boundary – this was agreed in advance with the school principle.
- 196 linear meters of native hedging was planted along the William Ellis School boundary.
- 296 m<sup>2</sup> of native planting has been planted at the Bull Path entrance adjacent to William Ellis School.
- 1000 m<sup>2</sup> of new turf has been laid. This will be left to grow long with a small strip of mown grass at the front.
- 45 linear meters of native hedge and 30m<sup>2</sup> native plants has been planted at the Keepers Lodge Garden at Highgate Road Entrance. The hedge has been planted close to the metal fence so that it will eventually grow through and soften the metal structure.
- 144 liners meters of native hedge have been planted around tennis courts 5-10.

The hawthorn hedge on Highgate Road and around the Bowling Green has been reduced by 20% in order to encourage new basal growth and thicken the base of the hedge.

9. The landscaping works were completed in late spring 2013 – photographs 2 and 4. There were two constructive comments received on the project, however, the vast majority of the public welcomed the rural change and passed on their appreciated verbal comments to keeping staff on duty. One member of the public sent positive email – appendix 5.

Photograph 1 – Before Landscape Works (view 1)



Photograph 2 – After Landscape Works (View 1)



Photograph 3 – Before landscape works (View 2)





Photograph 4 – Completed landscape works (View 2)



**Future Works**



10. The following phase of works is proposed to be implemented in the winter and spring of 2013/14:
- Removal of hawthorn edge along the Bull Path to open up the petanque lawn area.
  - Planting a community orchard with British native trees.
  - Repositioning of the tennis hut to open the views up Parliament Hill towards the Stone of Free Speech.
  - Removal of metal barriers and enhancement to the Highgate Road entrance, including Keepers Lodge – appendix 6.
  - Installation of 6 bicycle stands and granite sets in front of the poplar trees by the entrance to William Ellis School playground and farmers marked. These will be similar in design to the stands installed in Golders Hill Park in spring 2013– photograph 4.

#### Proposed Bicycle Stands



#### Corporate & Strategic Implications

11. The landscape enhancement works supports several of the City Together Strategy - The heart of World Class City 2008-2014 themes, including: *... supports our communities ... protects, promotes and enhances our environment ... is vibrant and culturally rich.*
12. The landscape design also shares the Open Spaces Department Business Plan 2012-2015 aims & objectives: *“Deliver sustainable working practice to promote the variety of life and protect the Open Spaces for future generations .. Manage, develop and empower a capable and motivated work force to achieve high standards of safety and performance”.*

13. The native plants used in the design supports the Overriding Policy D1 in the Hampstead Heath Management Plan Part 1 – Towards a Plan for the Heath 2007-2017, *“Conserve and enhance the historic and planned elements of the Heath’s designed landscapes, while improving their appearance and public facilities”*.

## **Financial and Risk Implications**

14. The costs associated with the implementation of the landscape enhancement works have been met from the Superintendents local risk budget.
15. There are no legal, property implications or human resource implications.

## **Conclusion**

16. The landscape enhancement scheme has been successful in transforming the municipal appearance.
17. The works have been welcomed by the general public and has improved their sense of arrival to one of the main southern gateways onto Hampstead Heath.
18. Parliament Hill keepers and the Heath tractor team have been extremely motivated in carrying out the project works despite the extremely cold winter and have welcomed to the rural landscaping change.

## **Appendices**

Appendix 1	Plan Highgate Road Entrances, Parliament Hill
Appendix 2	Approach View 1
Appendix 3	Approach View 2
Appendix 4	Planting List
Appendix 5	Email from member of public
Appendix 6	Highgate Road Entrance sketch

### **Contacts:**

Simon Lee: [simon.lee@cityoflondon.gov.uk](mailto:simon.lee@cityoflondon.gov.uk) | 020 7332 3544

Lucy Murphy: [lucy.murphy@cityoflondon.gov.uk](mailto:lucy.murphy@cityoflondon.gov.uk) | 020 7332 3797



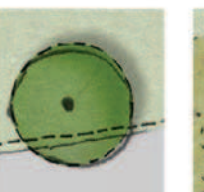
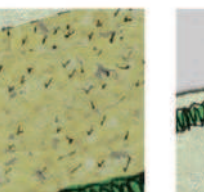
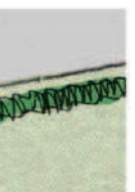
Declan Gallagher: [declan.gallagher@cityoflondon.gov.uk](mailto:declan.gallagher@cityoflondon.gov.uk) | 020 7332 3771

This page is intentionally left blank





**KEY**

-  Shrub Planting
-  Mown Grass
-  Trees
-  Meadow
-  Hedge



**NOTES**

- 1 BALL PATH - REPLACE METAL BOLLARDS, CREATE STONE SET THRESHOLD
- 2 PARLIAMENT HILL SCHOOL ENTRANCE
- 3 NEW MIXED HEDGE
- 4 METAL RAILING & EXOTIC PLANTING REMOVED. NEW MIXED HEDGE & MEADOW GRASS
- 5 METAL RAILING & HAWTHORN HEDGE REMOVED
- 6 NEW ORCHARD AND MEADOW AREA - USE HERITAGE TREE VARIETIES OF APPLES, PEARS, PLUMS, MEDLAR QUINCE, CRAB & APPLE
- 7 TENNIS HUT RELOCATED
- 8 NEW MIXED NATIVE HEDGE
- 9 CONIFERS REMOVED TO LET LIGHT IN
- 10 REMOVE METAL BARRIER. REPLACE WITH TIMBER BOLLARDS
- 11 MEADOW GRASS

Project		PARLIAMENT HILL APPROACHES	
Client		CITY OF LONDON	
Title		LANDSCAPE TREATMENT	
Drawing No.	Revision	Scale	
DC042-02	D	1:500@A1	
<b>DCLA</b> Dominic Cole Landscape Architects			
42 Brecknock Road London N7 0DD			
T 020 7700 7510 E studio@dominiccole.net			
D	Correction in notes	RB	31/07/13
C	Scaled to 1:500@A1	RB	15/07/13
Rev	Description	Drawn	Date



This page is intentionally left blank



# Parliament Hill Fields

An island of beautiful countryside, the magic of Hampstead Heath lies not only in its rich wildlife and extensive sports and recreational opportunities, but also in its proximity and accessibility to millions of people.



## Approach view one

The changes outlined are proposed to bring the rural character of the Heath to the Parliament Hill area reducing its municipal appearance. The plan also shows other proposed projects that we hope to carry out in the future when funding becomes available.

The pathway that runs along the boundary of the school contains lots of urban infrastructure such as railings, barriers, signs and municipal planting. The proposals are to; relocate the tennis hut to open up views of the Heath (7), replaced the exotic planting with native shrubs and wildflowers (4) and remove the railings. At the end of the path the railings around the house will be softened by adding a new native hedge (3).



Page 67

### Plan of Parliament Hill area

- 1 BALL PATH – REPLACE METAL BOLLARDS, CREATE STONE SET THRESHOLD
- 2 PARLIAMENT HILL SCHOOL ENTRANCE
- 3 NEW MIXED HEDGE
- 4 METAL RAILING & EXOTIC PLANTING REMOVED. NEW MIXED HEDGE & MEADOW GRASS
- 5 METAL RAILING & HAWTHORN HEDGE REMOVED
- 6 NEW ORCHARD AND MEADOW AREA – USE HERITAGE TREE VARIETIES OF APPLES, PEARS, PLUMS, MEDKAR QUINCE, CRAB & APPLE
- 7 TENNIS HUT RELOCATED
- 8 NEW MIXED NATIVE HEDGE
- 9 CONIFERS REMOVED TO LET LIGHT IN
- 10 REMOVE METAL BARRIER. REPLACE WITH TIMBER BOLLARDS
- 11 MEADOW GRASS



A similar project was carried out opposite the café in 2007 – the shrubbery area was opened up to reduce the tunnelling effect that had developed and extend the views across the Heath and the City.



Contact Details – Hampstead Heath

Tel: 020 7332 3322

Email: [hampstead.heath@cityoflondon.gov.uk](mailto:hampstead.heath@cityoflondon.gov.uk)



This page is intentionally left blank



# Parliament Hill Fields

An island of beautiful countryside, the magic of Hampstead Heath lies not only in its rich wildlife and extensive sports and recreational opportunities, but also in its proximity and accessibility to millions of people.



## Approach view two

The changes outlined are proposed to bring the rural character of the Heath to the Parliament Hill area reducing its municipal appearance. The plan also shows other proposed projects that we hope to carry out in the future when funding becomes available.

Visitors arriving at Hampstead Heath from Highgate road are greeted with an urbanised area containing railings, barriers, signs and municipal planting. The proposal is to soften the appearance of the railings around the house by adding a new native hedge (3). Further along the path (adjacent to the school) railings will be removed and planting replaced with native shrubs and wildflowers (4). The tennis hut will be relocated to closer to the courts to open up the views onto the Heath (7).



### Plan of Parliament Hill area

- 1 BALL PATH – REPLACE METAL BOLLARDS, CREATE STONE SET THRESHOLD
- 2 PARLIAMENT HILL SCHOOL ENTRANCE
- 3 NEW MIXED HEDGE
- 4 METAL RAILING & EXOTIC PLANTING REMOVED. NEW MIXED HEDGE & MEADOW GRASS
- 5 METAL RAILING & HAWTHORN HEDGE REMOVED
- 6 NEW ORCHARD AND MEADOW AREA – USE HERITAGE TREE VARIETIES OF APPLES, PEARS, PLUMS, MEDKAR QUINCE, CRAB & APPLE
- 7 TENNIS HUT RELOCATED
- 8 NEW MIXED NATIVE HEDGE
- 9 CONIFERS REMOVED TO LET LIGHT IN
- 10 REMOVE METAL BARRIER. REPLACE WITH TIMBER BOLLARDS
- 11 MEADOW GRASS



A similar project was carried out opposite the café in 2007 – the shrubbery area was opened up to reduce the tunnelling effect that had developed and extend the views across the Heath and the City.



Contact Details – Hampstead Heath  
 Tel: 020 7332 3322  
 Email: [hampstead.heath@cityoflondon.gov.uk](mailto:hampstead.heath@cityoflondon.gov.uk)



This page is intentionally left blank

## APPENDIX 5

### Plant List for Bull Path

	Common Name	Latin Name
Tree	Crab apple tree	<i>Malus sylvestris</i>
Hedging	Mixed Native Hedging	
Shrubs	Blackthorn	<i>Prunus spinosa</i>
Shrubs	Broom	<i>Cytisus scoparius</i>
Shrubs	Creeping willow	<i>Salix repens</i>
Shrubs	Elder	<i>Sambucus nigra</i>
Shrubs	Gorse	<i>Ulex europaeus 'Flore Pleno'</i>
Shrubs	Guelder rose	<i>Viburnum opulus</i>
Shrubs	Hawthorn	<i>Crataegus monogyna</i>
Shrubs	Hazel	<i>Corylus avellana</i>
Shrubs	Holly	<i>Ilex aquifolium</i>
Shrubs	Rowan	<i>Sorbus aucuparia</i>
Shrubs	Spindleberry	<i>Euonymus europaeus</i>
Shrubs	Viburnum	<i>Viburnum lantana</i>
Shrubs	Yew	<i>Taxus baccata (fastigata)</i>
Plants	Common stonecrop	<i>Sedum acre</i>
Plants	Common toadflax	<i>Linaria vulgaris</i>
Plants	Cowslip	<i>Primula vulgaris</i>
Plants	Foxglove	<i>Digitalis purpurea</i>
Plants	Hard shield fern	<i>Polystichum aculeatum</i>
Plants	Harts tongue fern	<i>Phyllitis scolopendrium</i>
Plants	Lords and ladies	<i>Arum maculatum</i>
Plants	Meadow cranesbill	<i>Geranium pratense</i>
Plants	Oxe-eye daisy	<i>Leucanthemum vulgare</i>
Plants		<i>Alchemilla mollis / vulgaris</i>
Plants		<i>Seilene uniflora</i>

This page is intentionally left blank

## APPENDIX 5

**From:** XXXXXXXXXXXX **On Behalf Of** XXXXXXXXXXXX  
**Sent:** 07 May 2013 19:10  
**To:** Heath, Hampstead  
**Subject:** Changes to the entrance to the Heath

Hi,

I just wanted to say how much I like the changes that have been made the entrance of the Heath near the tennis courts. The removal of the fence and addition of a lawn opens up and makes beautiful what was once a restricted and rather dull pathway.

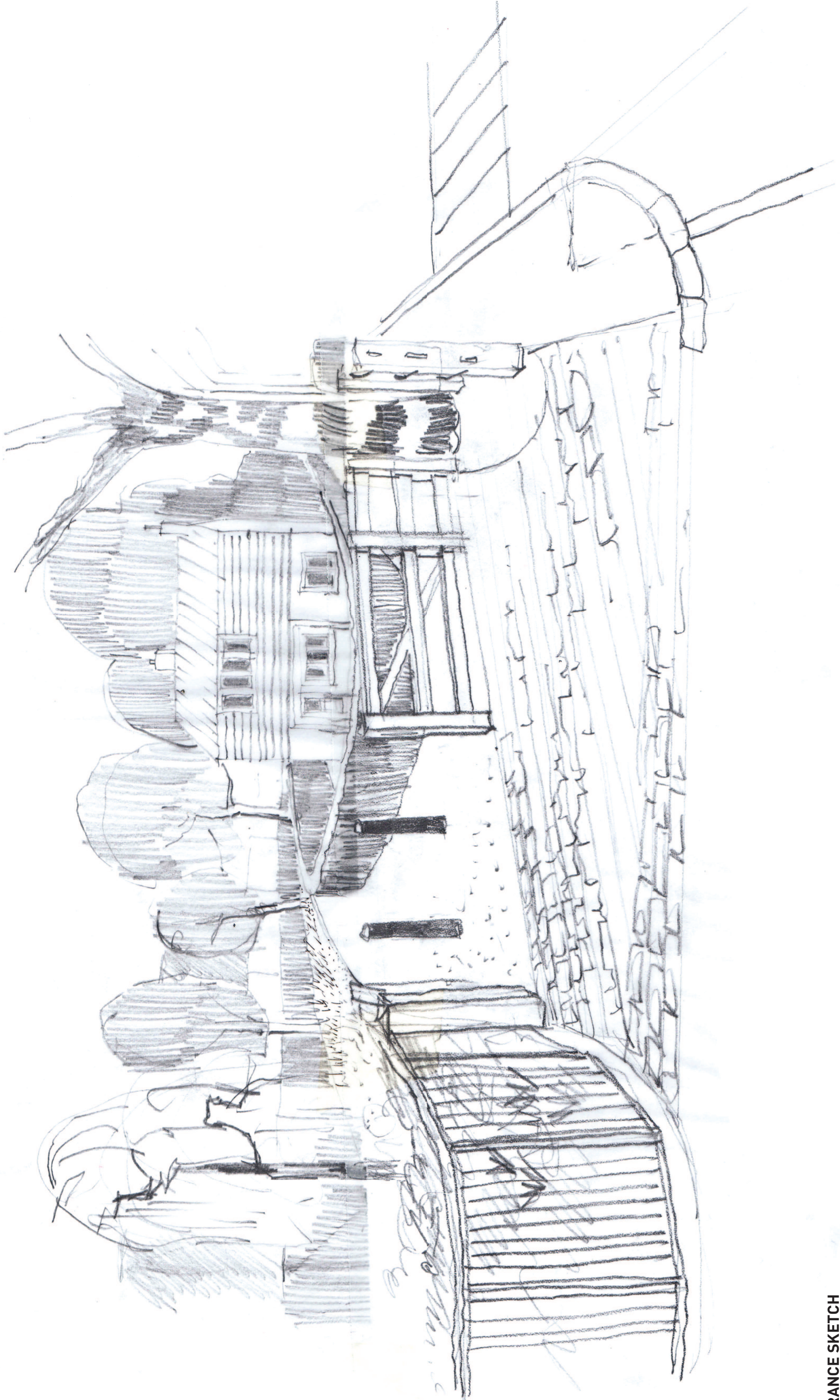
I understand the plan is to remove the hedges on that walk too. Please do.

Regards,

XXXXXXXX

This page is intentionally left blank





This page is intentionally left blank

Committee(s):	Date(s):	
<b>Hampstead Heath Consultative Committee</b>	8 <sup>th</sup> July 2013	
Subject: <b>Progress Report on Sustainable Planting in the Walled Garden - Golders Hill Park</b>		Public
Report of: <b>Superintendent of Hampstead Heath</b>		For Discussion
<p><b><u>Summary</u></b></p> <p>This report updates members on the implementation of phase one of the sustainable perennial permanent plantings in the Walled Garden at Golders Hill Park.</p> <p>The report also updates members on the progress of phase two of the planting programme and outlines the on-going cyclical horticulture maintenance requirements.</p> <p><b>Recommendation</b></p> <p style="padding-left: 40px;">Consultative Committee notes the successful implementation of the sustainable planting to replace season bedding planting schemes and the associated cost savings.</p>		

## **Main Report**

### **Introduction**

1. The Walled Garden in Golders Hill Park has been a formal flower garden for more than a century. Post Second World War it has been used to display spring and summer bedding planting schemes, common throughout many local authority parks and gardens in the United Kingdom.
2. As part of the City's efficiency savings that formed the basis of reports to your Committee in February and July 2011, reduction of seasonal bedding in Golders Hill Park was identified as reversible cost saving achieving on-going savings of £55,000 per annum by the end of 2013/14. The move to more sustainable planting is reversible if the economic climate was to change.

### **Proposals**

3. In late 2011 your Committee endorsed the following vision for a perennial sustainable planting scheme:
 

*“A strong formal structure using a mix of evergreen topiary, hedging and trees which will provide a framework for colour provided by the grasses, roses and herbaceous planting”.*
4. This vision acknowledged the need to continue to provide seasonal horticultural interest, whilst moving to sustainable perennial plants to give a colour, structure and food source for bees, butterflies and other insects for as long a season as possible.

5. Although initially skeptical about the proposed changes, staff, led by the Head Gardener from the Hill Garden Pergola, embraced the concept of new perennial planting and were heavily involved in preparing concept planting plans, plant list palette. An artist's impressions of the proposals was produced and put on public display in strategic locations in Golders Hill Park (see Appendix 1).

#### Phase 1 - Planting Season 2012

5. A phased approach of two years implementation program was set so that the public would see the benefits of the historical change from seasonal bedding to perennial sustainable planting. For the 2012 London Olympics a third of the summer seasonal bedding was retained to provide colour during the first growing season.
6. The front (170 m<sup>2</sup>) and west wall border (60 m<sup>2</sup>) were planted with sustainable perennials during the spring of 2012. Although the spring and summer seasons were unseasonable wet, the plants established and produced a fine successful display in the first year see photographs at Appendix 2.
7. Structured plants of cubed *Buxus sempervivens* (Box) and *Quercus ilex* (Evergreen Oak) clipped trees were planted out in all the borders. These provided the main structure or "framework" of the scheme and create added interest in the winter and early spring.

#### **Current Position**

#### Phase 2 – Planting Season 2013

8. In the spring of 2013 the remaining nine borders totaling (406 m<sup>2</sup>) were planted with sustainable perennial plants. The nine borders were prepared utilising bulky leaf compost which is brought on in the recycling area in Golders Hill Park.
9. Winter and spring flowering bulbs were planted in all the borders to add seasonal interest. A copy of the planting list is provided at Appendix 3.
10. Ongoing review of the phase 1 planting of the front and west borders and each individual bay within those borders is essential. The gardening team monitor and identify areas where they need to reduce the number of plants in a bay to prevent overcrowding, or increasing the number of plants to improve the visual impact. Some minor alterations to the front border have already been implemented as a result of this review process.
11. In the summer of 2013, small pockets of traditional summer bedding plants such as *Trachelium* and *Dahlia* will be planted in the nine borders. The plants will be supplied by West Ham Park Nursery.

#### Horticulture Maintenance

12. The management of sustainable perennial planting schemes requires craft level horticulture skills and knowledge. The maintenance works are carried out by the gardening team based in Golders Hill Park. The following outlines the cyclical maintenance programme:



### Spring & Summer

- Application of mulch - moisture retention and weed control
- Weed, pest and disease control - using non-chemical methods
- Application of organic fertiliser
- Staking - to support plants
- Irrigation - as required
- Dead-heading - to encourage a longer flowering season
- Answering public questions and providing advice

### Autumn & Winter

- Dead-heading
- Cutting & pruning back
- Lifting & dividing plants

### **Consultation**

13. The risk associated in the change from the historical seasonal bedding displays prevalent in Golders Hill Park for many years to sustainable planting did not cause a public outcry. Gardening staff have received many positive verbal comments and a senior member of staff from the HFL commented by e-mail on 24 September 2012:

*"I was most impressed by the new planting schemes at Golders Hill Park, when I walked round last week and by the beautifully reconstructed wall at Mawson's Hill Gardens".*

### **Corporate & Strategic Implications**

14. The planting design supports several of the City Together Strategy - The heart of World Class City 2008-2014 themes, including: *... supports our communities ... protects, promotes and enhances our environment ... is vibrant and culturally rich.*
15. The design proposal also shares the Open Spaces Department Business Plan 2012-2015 aims & objectives: *"Deliver sustainable working practice to promote the variety of life and protect the Open Spaces for future generations .. Manage, develop and empower a capable and motivated work force to achieve high standards of safety and performance".*
16. The planting design supports the Overriding Policy D1 in the Hampstead Heath Management Plan Part 1 – Towards a Plan for the Heath 2007-2017, *"Conserve and enhance the historic and planned elements of the Heath's designed landscapes, while improving their appearance and public facilities".*

## Implications

17. The costs associated with the implication of phases 1 and 2 of the sustainable perennial planting schemes have been met from the Superintendents local risk budget. The full saving of £55,000 that has contributed towards the budget reductions across the Division will be achieved during 2013/14.

## Conclusion

18. The sustainable planting scheme has been successful in uniting the different borders in the Walled Garden into a singular concept that flows seamlessly through the space and provides year round interest. Many of the plants which held their seed heads throughout the winter provided additional food sources for birds and habitats for invertebrates.
19. Gardening staff although initially disappointed with the proposed loss of seasonal bedding, have been totally committed from the initial design concept through to the implementation of the scheme. They have learned and gained new horticulture skills.
20. It is acknowledged that the Walled Garden in Golders Hill Park is a popular community facility used by local residents.

## Appendices

Appendix 1	Phase 1 - Season Photographs
Appendix 2	Phase 2 – Planting Plan
Appendix 3	Phase 2 - Planting List
Appendix 4	Golders Hill Sustainable Planting Parts 1 and 2

### Contacts:

*Simon Lee | [Simon.lee@cityoflondon.gov.uk](mailto:Simon.lee@cityoflondon.gov.uk) | 020 7332 3322*

*Declan Gallagher | [Declan.gallagher@cityoflondon.gov.uk](mailto:Declan.gallagher@cityoflondon.gov.uk) | 020 7332 3771*

*Adam Green | [Adam.Green@cityoflondon.gov.uk](mailto:Adam.Green@cityoflondon.gov.uk) | 020 73326652*

Appendix 1 – Phase 1 Season Photographs

Spring 2012 (Alliums in flower)



Mid- Summer (Heuchera, Geraniums in flower and structured foliage plants)





Late Summer (Assortment of perennials in flower)

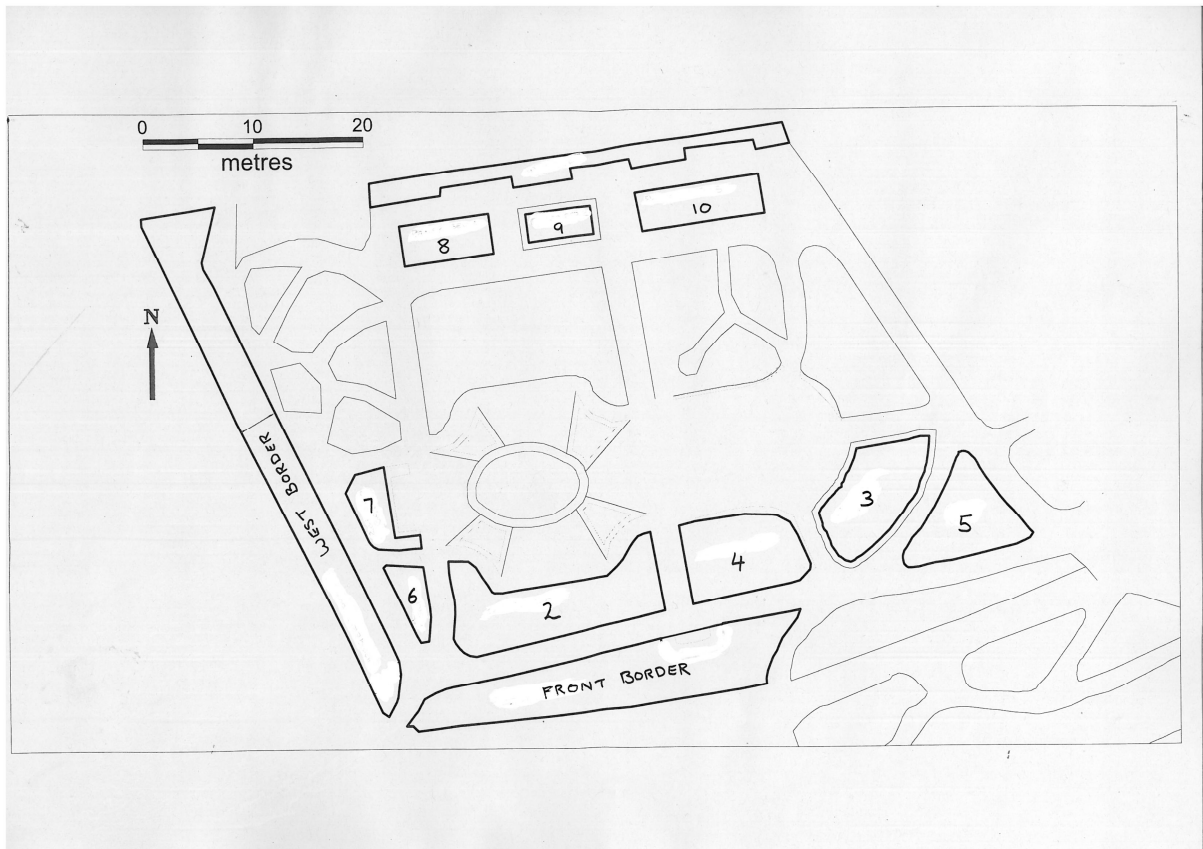




Winter 2012/13 (Frosted seed-heads)



## Appendix 2 – Phase 2 Planting Plan





Appendix 3 – Phase 2 Planting List

<p><b><u>Bed 2</u></b></p> <p><b>Blues</b>          Salvia “smouldering torches”          Perovskia “Blue spires”          Phlox “Blue paradise”          Rosa “Blue for you”          Agapanthus “Navy blue”          Eryngium planum “Blaukappe”          Aster “Little Carlow”          Agastache “Blue Fortune”          Agastache “Globetrotter”          Sedum “Bertram Anderson”          Geranium “Brookside”          Geranium “Orion”          Veronicastrum “Fascination”</p> <p><b>Oranges</b>          Rosa “Lady of Shallott”          Dahlia Catherine Deneuve          Crocosmia “Emily Mckenzie”          Crocosmia “Venus”          Hemerocallis “Bonanza”          Hemerocallis “Frans Hals”          Echinacea “White Swan”          Achillea “Inca Gold”          Libertia peregrinans</p> <p><b>Grasses</b>          Molinia “Transparent”</p> <p><b>Evergreen Groundcovers</b>          Stachys “silver Carpet”          Heuchera “Marmalade”          Heuchera “Southern Comfort”          Heuchera “Palace Purple”          Salvia purpurascens</p> <p><b>Bulbs</b>          Iris reticulate          Tulip “Ballerina”          Fritillaria imperialis Auroa orange          Allium azureum</p>	<p><b><u>Bed 3</u></b></p> <p><b>Pink/White</b>          Rosa “Spirit of Freedom”          Rosa “Raubritter”          Rosa “Louise Odier”          Rosa “Royal Jubilee”          Eupatorium “Orchard Dene”          Eryngium giganteum “Silver Ghost”          Sedum “September Glut”          Sedum “Matrona”          Sedum “Jose Aubergine”          Achillea “Pretty Belinda”          Hemerocallis “Catherine Woodbury”          Echinacea “Rosen Licht”          Echinacea “Rubenglow”          Echinacea “Fatal Attraction”          Rogersia “Chocolate Wings”          Veronicastrum virginicum “Album”</p> <p><b>Evergreen Groundcovers</b>          Stachys “Silver carpet”          Heuchera “Frosted Violet”          Salvia purpurascens</p> <p><b>Grasses</b>          Molinia “Transparent”</p> <p><b>Bulbs</b>          Galanthus nivalis          Galanthus nivalis “Flore pleno”          Tulip “Queen of the Night”          Tulip “Menton”          Allium “Pinball Wizard”          Nerine bodenii</p>
<p><b><u>Bed 4</u></b></p> <p><b>Red</b>          Achillea “Walter Funke”          Sedum “Red Cauli”          Crocosmia “Ember Glow”          Hemerocallis “Stafford”</p>	<p><b><u>Bed 5</u></b></p> <p><b>Red/Orange</b>          Rosa L D Braithwaite          Rosa “Dusky Maiden”          Sedum “Red Cauli”          Sedum “Jose Aubergine”</p>

Kniphofia "Lord Roberts"  
Lobelia "cardinalis"

**Orange**

Rosa "Lady Emma Hamilton"  
Hemerocallis "Frans Haals"  
Rudbeckia "Goldsturm"  
Achillea "Inca Gold"  
Crococsmia "Colombus"  
Libertia peregrinans  
Dahlia "Catherine Deneuve"  
Helenium "Mocheim Beauty"

**Groundcovers**

Stachys "Cotton Bol"  
Stachys "Silver Carpet"  
Heuchera "Sweet Tea"  
Heuchera "Caramel"  
Heuchera "Palace Purple"  
Salvia pupurea  
Ballota "pseudodictamnus"

**Grasses**

Molinia "Karl Foerster"

**Bulbs**

Fritillaria imperialis "Rubra Maxima"  
Tulip "Ballerina"

Dicentra "King of Hearts"  
Dicentra "Burning Hearts"  
Crococsmia "Babylon"  
Achillea "Red Velvet"  
Achillea "Walter Funcke"  
Hemerocallis Stafford  
Hemerocallis "Frans Hals"  
Kniphofia "Lord Roberts"  
Dahlia "Bishop of Llandaff"

**Evergreen Groundcovers**

Stachys "silver Carpet"  
Heuchera "Obsidian"  
Heuchera "Frosted violet"  
Heuchera "Blood red"  
Salvia purpurascens  
Ballota pseudodictamnus

**Grasses**

Molinia "Transparent"

**Bulbs**

Tulip (red)

**Bed 6**

Rosa "Lady of shallot" (Standard)  
 Convolvulus sabatius  
 Trachelium

**Grasses**

Molinia "Transparent"  
 Molinina "Edith Dudzus"

**Bulb**

Tulip "Burgandy"

**Bed 7**

Panicum "Heavy Metal"  
 Molinia "edith Dudzus"  
 Dryopteris cristata "The King"  
 Heuchera "Green Spice"  
 Echinacea "Green Jewel"

**Bulb**

Tulip "Spring Green"

**Bed 8 (Pink, White and Blue)**

Rosa St swithun  
 Hydrangea Annabelle  
 Rogersia "Chocolate wings"  
 Eupatorium "Orchard Dene2"  
 Veronicastrum virginum "Album"  
 Echinacea "Fatal attraction"  
 Echinacea "white Swan"  
 Anaphalis "Summer Snow"  
 Actea "Brunnette"

**Evergreen Groundcovers**

Heuchera "Pewter Moon"  
 Heuchera "Fire chief"  
 Heuchera "Plum Pudding"  
 Salvia purpurea  
 Stachys "Silver carpet"

**Grasses**

Molinia "Karl Foester"

**Bulb**

Tulip "Greenland"

**Bed 9**

Rosa "Iceberg"  
 Pulmanaria "Sissinghurst White"

**Bulb**

Tulip "salmon Impression"

**Bed 10**

Rosa "Charles Rennie Macintosh"  
 Phlox "Franz Schubert"  
 Veronicastum "Fascination"  
 Rogersia "chocolate Wings"  
 Perovskia "Blue spire"  
 Echinacea "fatal Attraction"  
 Sedum matron  
 Sedum "Jose Aubergine"

**Evergreen Groundcovers**

Heuchera "Frosted Violet"  
 Heuchera "Sugar Plum"  
 Heuchera "Shanghai"  
 Salvia purpurea  
 Stachys "Silver Carpet"

**Grasses**

Molinia "Transparent"

**Bulb**

Tulip "Negrita"

This page is intentionally left blank



# Golders Hill Park

## Walled Garden

The walled garden is being transformed to create a stunning and sustainable formal flower garden for the future. Our vision is to create a strong formal structure using a mix of evergreen topiary, hedging and trees which will provide a framework for colour provided by grasses, roses and herbaceous planting.



## For people & for wildlife

### Vision for design of the Walled Garden

#### History

The area currently being redeveloped has been a formal flower garden for more than a century and the aim is to continue this into the future.

The style of planting has changed several times in its history. Repton had a hand in the original design of the 'blooming flower garden'.

Until 1925 it was a 'Shakespeare garden' containing flowers mentioned in Shakespeare's plays.

Since the Second World War the garden has been used to display seasonal bedding, as has been common practice in many local authority parks.

#### Design

Many local authorities are now dispensing with annual bedding, owing to its high costs and heavy use of resources, including water, labour and transport.

The vision for the Golders Hill Walled Garden is to create a stunning and sustainable formal flower garden for the future. The use of strong colours in the flower garden is of particular importance to our visitors and so we will focus on colour. Specific combinations of colours will be located within each bed.

Hardy and perennial planting is being used to give structure and colour for as long a season as possible.

#### Plants

Just a few of the plants likely to be introduced include Allium Purple Sensation, Achillea 'Feurland', Verbena bonariensis, Salvia 'Mainacht', Helenium 'Moerheim Beauty', Dahlia 'Catherine Deneuve', Echinacea 'Robert Bloom', Miscanthus nepalensis, Salvia 'Cardonna' and Geranium 'Rozanne'.

Golders Hill Park office: 020 7332 3511  
Heath constabulary: 020 8340 5260  
[www.cityoflondon.gov.uk/hampstead](http://www.cityoflondon.gov.uk/hampstead)



Page 69



This page is intentionally left blank

# Golders Hill Park

## Walled Garden

The new design uses the same broad palette of planting on all the beds and will give a new unity and greater overall impact to the space. Clipped 'cubes' of evergreen oak trees emerging from box 'platforms' will give an imposing architectural presence during the winter months. The evergreen oak, native to the Mediterranean region, will link this scheme with the existing Mediterranean garden. New views will be opened up through the borders and across the park to the bandstand.



Page 91

## For people & for wildlife



The new sustainable planting scheme is designed to unite the different beds into a strong singular concept that flows seamlessly through the space.

The clipped box cubes and clipped trees will form the main structure or 'bones' of the scheme and will take centre stage in deepest winter and also in early spring.

The ornamental perennial plantings will be rich in nectar and highly attractive to bees, butterflies and other insects.

Many of the plants will hold their seedheads right through the winter months which will provide further food for birds and habitats for invertebrates.

The planting will allow for plenty of variety, colour and interest within the various beds from spring to late summer.

**SPRING** - the focus will be on a bold display of bulbs amongst the new emerging fresh green foliage of grasses and perennials during this early part of the year.

**SUMMER** - the grasses and perennials come into their own from June and give a great performance right through to late summer and early autumn.

**AUTUMN / WINTER** - many of the perennial plants used will have sculptural seedheads and strong skeletal winter structure.



Work on the new Walled Garden will take place over coming months, we hope that it will be complete by Spring 2013.



Golders Hill Park office: 020 7332 3511  
Heath consultancy: 020 8340 5260  
[www.cityoflondon.gov.uk/hampstead](http://www.cityoflondon.gov.uk/hampstead)

This page is intentionally left blank

<b>Committee(s):</b>	<b>Date(s):</b>
Hampstead Heath Consultative Committee	8 <sup>th</sup> July 2013
<b>Subject:</b> Update on Sports Activities	<b>Public</b>
<b>Report of:</b> <b>Superintendent of Hampstead Heath</b>	<b>For Discussion</b>
<p><b>Summary</b></p> <p>This report provides an update on a number of sports activities together with feedback from the last Sports Advisory Forum and a proposal to enable extended use of the amenity sports areas in Parliament Hill for winter training purposes.</p> <p><b>Recommendation(s)</b></p> <p>That the members of the Consultative Committee provide their views on the report.</p>	

## Main Report

### Background

1. The Sports Advisory Forum was established in 2009, its main aim is to “influence the management and development of sport on Hampstead Heath in accordance with the Management Plan and the terms of this document”. Comprised of a number of different Heath sports users and external agencies associated with promoting sport and health and well-being, it has proved to be a valuable Forum in recognising and promoting the importance and value placed on sport across the Heath.

### Recent Events

2. This report provides a brief update on some of the key activities that have been undertaken over the last three months, together with minutes of the last Sports Advisory Forum held on the 20<sup>th</sup> May 2013 (see appendix 1).

#### *Highgate Harriers – 10km Open Event*

3. On June 6<sup>th</sup> 2013 Highgate Harriers held their inaugural “Night of the 10,000m Personal Bests”. This new middle distance athletics initiative from attracted national interest and all three 10,000m races were filled in a matter of days when the entry went live in January 2013.

4. Ben Pochee from Highgate Harriers said “The aim was to create an annual 10,000m track event that brings together quality club runners, provide them with a platform to work collectively to achieve their personal best (PB) potential and gain the confidence required to truly take on the tough 25 lap event.” He went on to say “We at Highgate firmly believe that racing standards can be further enhanced if our club runners have an annual opportunity to plan their training focus towards a trusted competitive, quality rich, pace guided and atmospheric 10,000m track event.”
5. To put into context the quality field lining up at Parliament Hill track on June 6th, over the whole of 2012, UK Athletics had 17 athletes (including Mo Farah’s Olympic gold victory) break 30 minutes on the track for 10km, the Highgate Harriers event on June 6th had 24 men targeting this sub 30 minute milestone. Unfortunately the evening was really windy which hampered times however out of the 75 athletes 44 registered a personal best and one of the athletes the winner of the “A Class” event Ed McGinley went under the fabled 30 minutes slot in 29.53
6. Feedback thus far from athletes / coaches has been hugely positive, few had experienced a track event with so much excitement and the overwhelming request has been to release the 2014 event date. Ben Poachee organiser commented “As such I’m very keen to build upon our initial success to ensure next year we have higher quality racing, larger crowds and more theatre to attract the local community - fundamental to this development will be working closely with CoL and so as soon as we have a proposed date I would relish sitting down with you to discuss further the event.” It was agreed that promoting a further event in 2014 should be pursued.
7. Adding to ambience of the event, Highgate Harriers had former 10,000m world record holder David Bedford (a member of the Sports advisory Forum) in attendance offering inspirational words to the next generation of club athletes & picking a winner from each race that in his opinion worked hardest to keep their group on Personal Best target.

*Lord Mayors Charity Appeal City Dip*

8. On Friday and Saturday the 6<sup>th</sup> and 7<sup>th</sup> June 2013 we hosted the Lord Mayors Charity Appeal City Dip event for the second time in conjunction with the Lord Mayors appeal team. This was a 5,000m sponsored swim which attracted over 25 teams, raising several thousand pounds for the appeal.
9. The Lady Mayoress Dr Clare Gifford participated in the event, swimming her 5,000m at the Kenwood Ladies Pond. This has very much helped to raise the profile of this cherished ladies facility.
10. The lifeguards at Hampstead Heath are keen to work with future Lord Mayors Charity Appeal teams to host future City Dip events.

*Hampstead Heath “Tug of War Championships*

11. This event was started last year under the Green to Gold banner whilst this years entrance field was a little disappointing with 4 teams in the senior event and only 2 in the junior one, it attracted a large audience and great fun was



had by all the competing teams. The title went to the Hampstead Heath Rugby Club 'oldie's who lost last year to the Hampstead Rugby Club 'young guns'.

#### *Other events*

12. *The Lido* also hosts a number of clubs and other events during this early part to the summer. Water polo is played on a Sunday and Wednesday evenings from May to September by the Polytechnic and Otters Water polo teams. Triathlon training takes place three times per week at both the Mixed Pond and the Lido. There is also a free Tai Chi club that use the poolside on a Saturday mornings throughout the year.
13. *Quad Kids* - Highgate Harriers now host a monthly Quad Kids on the last Sunday in every month, with around 100 youngsters aged up to 12 (with some as young as 3!) taking part in a 75m sprint, 600m run, vortex throw and long jump. Their performances are then converted into points with certificates handed out with the total points on. Quad Kids is one of the most successful club events in the London area trying to inspire children to become active in sports and is hosted by Highgate Harriers with the City's support.
14. *Disability Athletics 11th June* - Camden Sports Development and Highgate Harriers organised a day of athletics at the Parliament Hill running track for Camden's Disabled youngsters. Over 80 children attended and thoroughly enjoyed the sprints, throws, jumps and even a tug-of-war! This is the third year Camden and Highgate Harriers have held this event, this year a similar athletics day is planned for University ages in July.
15. *Park Run* this weekly timed event over 5km continues to attract on average 80 to 120 runners and below are some statistics as of Saturday 25th May, demonstrating showing what a quality event this is becoming:
  - Number of events: 105
  - Number of runners: 2,162
  - Number of runs: 9,041
  - Number of first finishers: 91
  - Number of clubs: 174
  - Number of PBs: 1,987
  - Average number of runners per week: 86.1
  - Average number of runs per runner: 4.2
  - Biggest Attendance: 186
  - Average run time: 00:27:05
  - Total hours ran: 4,080
  - Total distance ran: 45,205 km
  - Female Record Holder Rebecca Robinson - 18:52 - Event 74 (13/10/12)
  - Male Record Holder Ben Moreau - 15:44 - Event 37 (21/1/12)

#### **Proposal Hampstead Rugby Club**

16. At your last Committee walk in March 2013 a proposal was put forward by Hampstead Rugby Club and Highgate Harriers to introduce "pop up" flood

lights on the main pitch to help accommodate winter training sessions. A video of the proposals was shown and at the presentation members were generally supportive of the proposals.

17. The flexibility of the system will greatly assist with improved turf management, as the current dedicated training areas become very compacted and muddy in the depth of winter. Given that the lighting systems are low level with little or no light pollution your Committee supported the principle of introducing a one-year pilot on the sports areas to the rear of the running track and on the amenity grass area to the north of the running track on training nights (Tuesdays and Thursdays), so long as the systems were removed by 9.00pm.

### **Corporate & Strategic Implications**

18. This proposal supports the City Together Strategy - The Heart of World Class City 2008-2014 theme of: ... supporting our communities.
19. The proposal also shares the Open Spaces Department Business Plan 2012-2015 aims & objectives: "Promotes opportunities to value and enjoy the outdoors for recreation, learning and healthy living".
20. This report also supports the Overriding Objective for Sports as set out in the Strategic Management Plan: "Work collaboratively in maintaining and developing the existing sports facilities and activities in response to changing demands ensuring appropriate provision for all sections of the community."

### **Implications**

21. The activities and events outlined in this report are supported by the various partnerships with Clubs and other agencies that underpin the sports activities undertaken across the Heath. The cost of the collapsible floodlights would be met by the Hampstead Rugby Club.

### **Conclusion**

22. This report demonstrates the important contribution that sports activities offer Heath users.

### **Simon Lee**

Superintendent of Hampstead Heath

T: 020 7332 3322

E: [simon.lee@cityoflondon.gov.uk](mailto:simon.lee@cityoflondon.gov.uk)

## HAMPSTEAD HEATH SPORTS ADVISORY FORUM

MONDAY 20 MAY 2013

### **MINUTES OF THE HAMPSTEAD HEATH SPORTS ADVISORY FORUM HELD AT THE STAFF YARD, PARLIAMENT HILL FIELDS, LONDON NW5 ON MONDAY, 20 MAY 2013 AT 6:30PM.**

#### **Present**

##### **Members:**

Richard Sumray (Chairman)	-	Hampstead Heath Consultative Committee (London Council for Sports and Recreation)
Bob Slowe	-	Hampstead Heath Consultative Committee (Highgate Harriers Committee)
Marc Hutchinson	-	HH Winter Swimming Club/ Heath & Hampstead Society
Richard Priestley	-	Highgate Harriers
Simon Taylor	-	Hampstead Rugby Club
David Walton	-	Hampstead Heath Consultative Committee (Sports Users Representative)

##### **In attendance**

Jeremy Simons (Hampstead Heath Management Committee Chairman)  
Neil Brookes (London Orienteering Klub)

##### **Officers**

Natasha Cendrowicz	-	Note taker (also Highgate Harriers)
Simon Lee	-	Superintendent, Hampstead Heath
Declan Gallagher	-	Manager, Parliament Hill
Paul Maskell	-	Leisure & Events Manager, Hampstead Heath

#### **1. Apologies**

Apologies were received from John Carrier, Dave Bedford, Rudolph Benjamin and Nigel Robinson.

#### **1A. Chairman's Welcome**

Following his decision to step down as Chairman of the Sports Forum, Bob Slowe invited Richard Sumray to take over as Chairman.



2. **Minutes of the last meeting**

The minutes of the last meeting held on 4 February 2013 were agreed as a correct record.

3. **Matters Arising**

Camden Representative (item 3) It was reported that Nigel Robinson had been appointed by Camden Council as their replacement representative on the Sports Forum.

BMF (item 3) Paul Maskell reported that he had reservations about altering the contract with British Military Fitness. The two open air fitness operators he had contacted were not able to offer as favourable terms as BMF. A brief discussion took place regarding whether it was worth opening up the franchise to other operators. As the contract was renewed on an annual basis, each year in September, the Chairman suggested that for this year, the BMF contract be renewed, with a view to considering it in more detail in the future. The suggestion by Paul Maskell that BMF be invited to make a presentation at the next Sports Forum was supported.

**RESOLVED:** That:-

- i) the contract with BMF be renewed for a further year, with the view to considering open air fitness operators in more detail in the future; and
- ii) a representative from BMF be invited to make a presentation at the next Sports Forum meeting.

Charging Policy (item 4) The Chairman reported that the charging policy had been endorsed by the Consultative Committee. A discussion then took place regarding which sporting activity should be looked at in detail first. There was support for examining the athletics track and cricket facilities first. Simon Lee agreed to bring a paper to the next meeting setting out charging proposals for the athletics track and cricket facilities.

**RESOLVED:** That a paper setting out charging proposals for the athletics track and cricket facilities be brought to the next meeting.

Presentation by Highgate Harriers (item 6) Simon Lee reported that at the last Consultative Committee walk, a presentation had been given regarding collapsible floodlights. There had been support for introducing this on a one year trial basis.

**RESOLVED:** That Simon Lee formally seek the views of the Consultative Committee regarding the proposal to introduce collapsible floodlights on the Heath to assist with running and rugby winter training, on a one year trial basis.

Draft Cancellation Policy (item 8) Simon Lee reported that although the report had been considered by the City of London Superintendents'

group, it still needed further refining. He would bring back an updated version to this Forum.

**RESOLVED:** That an updated version of the draft cancellation policy report be submitted to the Sports Forum for consideration.

4. **Update on Places, People and Play**

Simon Lee reminded the Sports Forum that there were capacity issues in his department due to the demands of the Dams project. He hoped to still take forward this bid, but was mindful that any approach to the London Marathon Trust for match funding, might compromise any future bid for any other sports facilities such as the athletics track. Jeremy Simons added that the Crossrail commitment of £200 million meant that the City of London was having to rein in spending on capital projects. The Chairman undertook to sound out the Secretary of the London Marathon Trust regarding this and any future bids for the athletics track. Simon Lee undertook to discuss the bid further with the Places, People and Play representatives.

**RESOLVED:** That:-

- i) the Chairman sound out the Secretary of the London Marathon Trust regarding this and any future bids for the athletics track; and
- ii) Simon Lee discuss the bid further with the Places, People and Play representatives.

5. **Verbal Presentation by London Orienteering Klub**

Neil Brooks, the Chairman of the London Orienteering Klub gave a presentation on the activities of the Club. He explained that the Club had been operating for forty years, and although it did not have a home, it was based at Hampstead Heath. While orienteering had started in wild wood settings, it had evolved to more urban routes in recent years. A recent Hampstead Village run had attracted nearly two hundred participants. Most championship events took place in the winter when pressures on parking were not at such a premium. Due to regular changes in natural boundaries, areas needed to be regularly remapped. Google Earth had proved to be a good source for drawing maps. In the future, orienteering was moving towards more local events where people could just turn up and have a go. There was a push towards more community events, reflected in recent changes to more urban and local events, which had helped to diversify the sport.

During the course of discussion, Neil Brooks explained that the ease of use Hampstead Heath, together with access to the Kenwood Estate, was its main advantage. Unlike some open space settings, there was no charge. He explained that smaller parks were good for holding 'come and try' events. It was noted that although there were two permanent courses on Hampstead Heath, the Golders Hill Park route was less used. Paul Maskell stated that a lot of schools used the Hampstead Heath course. Already orienteering was moving to electronic mapping and the downloading of courses from the internet.

In the future, integrating the posts with phone technology, would reduce reliance on printed maps. The cost of printing maps was included in race entry fees. Copies of Hampstead Heath orienteering maps and other popular courses were laid round the table. Thankfully not many of the orienteering posts on Hampstead Heath were moved.

Looking to the future, Neil Brooks hoped to map the South East corner of the Heath, using existing infrastructure for markers. He did not foresee using the Heath for big championship events as it was too open. The Chairman thanked Neil for his presentation and suggested that a discussion be held in the future regarding how to link orienteering with other sports on the Heath.

**RECEIVED.**

**6. Update on Lido**

Simon Lee updated the Forum on £350,000 repairs being undertaken at the Lido. Discussions had been held with a local architect regarding whether re-orientating the building would increase usage. He referred to Brockwell Lido as a helpful template for understanding changes that could be introduced to the Lido, particularly to the café, to encourage more year round usage. He suggested that this architect make a presentation on their findings to a future meeting. The Chairman agreed that a discussion be held in the future about how to use the Lido space throughout the year.

**RESOLVED:** That:-

- i) a presentation be made by the local architect on options for re-orientating the Lido building to increase usage; and
- ii) a discussion be held in the future about how to use the Lido space throughout the year

**7. Update on Bowls Club and Croquet Club**

Bob Slowe reminded the Forum about efforts taken in the past to bring the bowls and croquet clubs together to run the Bowling Green. This experiment had not worked as these were two very different groups, without a clear strategy for winter maintenance works or dealing with reduced income following the recent wet summer. They had been advised to approach Camden Sports Council for a maintenance grant. A further meeting with both groups was due to take place at the end of the summer to review funding arrangements.

**RECEIVED.**

**8. Any other business**

- i) Consultative Committee Representative It was noted that as Bob Slowe was due to stand down, a vacancy would arise on the Consultative Committee. Simon Taylor agreed to take on this appointment.



**RESOLVED:** That it be noted that Simon Taylor had replaced Bob Slowe as one of the three sports' facilities representatives on the Consultative Committee.

ii) Green to Gold Update Paul Maskell updated the Forum on recent sporting activities linked to the Green to Gold initiative, including hosting the Camden Schools Cross Country Championships at the beginning of May.

iii) Parkrun update Paul Maskell updated the Forum on Parkrun's second anniversary event, which had attracted 180 participants.

iv) City Dip Paul Maskell reported that this year's City Dip was being hosted jointly with the Golders Lane pool at the beginning of June.

v) Gas works at the Heath extensions Simon Taylor requested that further thought be given for a third rugby pitch at the Heath extensions now that the gas works had been completed.

vi) Green Gym proposal Responding to a suggestion by David Walton that a green gym sited at the tennis courts would diversify the sports offering at the Heath, Declan Gallagher explained that this was unlikely to garner support due to the helpful income from the tennis courts.

vii) Overarching Strategy The Chairman stated that he hoped that this group would be able to develop an overarching strategy for all sports on the Heath.

9. **Date of Next Meeting**

**RESOLVED:** That the next meeting be held on 23 September 2013 starting at 6:30pm.

**The meeting closed at 8:26pm.**

-----  
**CHAIRMAN**

**Contact: Natasha Cendrowicz**  
**tel. no. 07952096201**  
**e-mail: natasha @cendrowen.freeseve.co.uk**

This page is intentionally left blank